

# Augusta Auctions



Decades of Decadence

---

Wednesday - December 7, 2022

## Decades of Decadence



### 1: THREE PIECE HAMMERED SILK EVENING ENSEMBLE, 1930s

USD 1,200 - 1,500

3-pc pale pink evening ensemble c/o bias cut evening gown w/ broad shaped & corded bands from either side of front neckline to SS at W & continuing as floating panels up to SHs, single bars band horizontally inserted across throat, halter neckw/ snap closed to extended ties at CB of neck, plunging surplice back, pleated & draped cummerbund style W band, full asymmetrically trained skirt, matching slender stole joined & gathered at center & matching rabbit fur trimmed cape, cape SH-SH 17.5", L 36", dress B 40", W 30", L 63.5"-74.5", shawl Wd 1.5"-7", L 98", (minor wear to fur, tiny wear spot back right SH blade, scattered tiny pulls/scuffs to all pieces, 1.5" light stain dress lap, few tiny wear spots) both excellent.



### 2: CREPE CHIFFON LAME POLKA DOT EVENING DRESS, LATE 1930s

USD 300 - 500

Sleeveless evening dress in black silk chiffon w/ large lame polka dots, gathered over SHs, at CF B for V-neckline & at front W, self-covered buttons at CB, flared skirt w/ extra gores for fullness, B 39", W 27", L 57", (tarnish to lame, scattered pulls, minor lame loss, scattered tiny holes esp in skirt, 1 missing CB button, 5" repair back left W, cluster of four 0.25" holes at seat) good.



### 3: LAME EVENING DRESS, 1930s

USD 500 - 800

Wine red novelty weave lame evening dress w/ shaped overlay to bodice for bolero effect at CF & peplum at CB, long W self-tie, narrow ankle length skirt, B 40", W 28", L 56", (minor tarnish to lame, scattered tiny pulls) excellent.



### 4: BIAS CUT PARTY DRESS, 1930s

USD 300 - 500

Pastel silk crepe resist dyed & printed bias cut evening gown, w/ high front neckline to V at CB, cold SH w/ draped ruffle, inverted V empire W w/ gathering under B, floor length skirt w/ tiered horizontal ruffles at CB, SS snap closure, B 38", W 28", L 62", (1" seam opening left of CF W, many tiny-0.25" light spot stains, light underarm stains, light stains to lower skirt & train, few tiny holes, two 0.5" seam openings back W, 0.5" tear back right SH ruffle at armscye) good.



### 5: BEADED CHIFFON PARTY DRESS, MID 1920s

USD 400 - 600

Beaded salmon crepe chiffon party dress embroidered w/ faceted seed & short bugle beads in red, black white, crystal, blue & green in both & tracery motifs, scoop neckline, scalloped SH caps, broad draped chiffon W band, both SHs w/ partial snapclosures, B 42", W 38", L 38", (2 undone tacks at W sash, few tiny pulls, scattered light spot stains, light 0.25" stains to hem, minor wear to armscyes, wear to W sash from beads, SH openings tacked shut) very good.



### 6: SILK SATIN CRYSTAL BEADED PARTY DRESS, 1920s

USD 400 - 600

Black silk satin dress embroidered w/ crystal beads in all over stylized sun & rain motif, V-neckline, armscyes & original tie belt w/ dense rows of beading, scalloped hemline w/ overlapping looped fringe, B 42", W 45", L 41", (bead loss mostly at seat, scattered tiny pulls, larger pulls at left SH, 0.25"-0.75" spot stains lap & left armscye) very good.



### 7: DRAMATIC BEADED & SEQUINED FLAPPER DRESS, 1920s

USD 800 - 1,200

Nude silk georgette party dress heavily embroidered w/ silvered crystal & bugle beads, rhinestones & stamped & unstamped silver sequins, dramatic two tiered silvered bugle beaded scalloped fringe, B/W 38", L 39", (re-lined, bead & sequin loss, minor shattering underarms & SH straps, minor sequin damage, several long tears in skirt esp along seams) fair-good. Ohio State Historic Costumes & Textiles Collection.

## Decades of Decadence



### 8: SILK CHIFFON SUMMER EVENING ENSEMBLE, c. 1930

USD 500 - 800

2-pc printed chiffon evening ensemble in multi-colored poppy motif c/o sleeveless evening gown w/ surplice bodice, slight cowl neck at back & elaborate pieced trained skirt, matching jacket w/ dolman sleeves, broad draped reverses & fitted W band w/ paste buckle, dress B 44", W 34", L 61", jacket W 39.5", L 21", (slip N/I, dress altered at CF W, armscye facings removed at bottom & left fraying, 2 tiny holes w/ pulls at back left SH blade, few spot stains & pink paint spots to jacket, CF belt panel repaired/altered at left attachment, few tiny holes top left B, fraying around hem) dress excellent, jacket good.

---



### 9: TWO WOOL OR SILK DAY DRESSES, EARLY-MID 1880s

USD 500 - 800

3-pc black wool & silk blend c/o tailcoat bodice w/ silk piping to satin faux vest, turn back cuffs, armscye, W & tails, black glass buttons, draped Polonaise overskirt w/ piped satin & tassel edging w/ applied shaped chenille fringe, CF bow, wool underskirt w/ 4 rows of ruffles edged in satin, c. 1883, B 35", W 24", L 23"/34", underskirt W 23.5", L 40", overskirt W 24", L 35"-40", (minor wear/stains, missing top button); 3-pc heavy silk taffeta c/o Basque bodice w/ CF marcasite buttons in brass bezel closures, ext peplum w/ flat bow, overskirt w/ shaped panels, heavily ruched & ruffled underskirt, c. 1885, B 36.25", W 25", L 18"-24.5", underskirt W 25", L 40", over 26", L 37", (2 missing buttons, no skirt closure, undone pleats) all good-very good

---



### 10: SILK SATIN WEDDING GOWN, PARIS, c. 1895

USD 800 - 1,000

Cream silk satin w/ fitted faux vest front, self-plastron & chiffon overlay ruched at stock collar, draped over CF bodice & pleated at cuff, self covered buttons at wrist, leg o? mutton sleeve, full skirt w/ square cathedral length train, petersham label "A. Dusuzeau II Rue Du 4 Septembre, Paris", B 34", W 22.5", L 18", skirt W 21", L 43"-106", (armscyes mostly unpicked, lining shattered, petersham removed & included, some bones missing/some poking out, many small scuffs/pulls, tiny-0.5" holes in chiffon yoke & cuff, tiny-0.5" stains throughout, light train discoloration, 3" seam opening CB W band) skirt good, bodice fair-poor. Ohio State Historic Costumes & Textiles Collection.

---



### 11: TWO SILK DAY DRESSES, 1890s

USD 500 - 800

2-pc russet silk taffeta w/ steel CF button closures, standing turn-down collar, CF insertion, lapel facing & turn-back cuffs of russet brown silk ottoman, skirt w/ knife pleated CB & broad gathered hem ruffle, lined in cotton sateen, early 1890s, B 35.5", W 27", L 19", skirt W 28", L 43.5", (6.5" seam opening collar, tiny-5.5" stains, tiny holes) very good; 2-pc w/ holly spot motif on figured satin ground, black silk satin stock collar w/ double bow, integrated bolero jkt w/ SH caps, CF opening & W edged w/ satin ruffle, CF w/ grouped ribbon applique, silk satin cummerbund W band w/ vertical double half bow at CB, skirt pleated at CB, B 36", W 25.5", L 16", skirt W 24", L 38.5", (collar detaching, shattering arms, W & trim) fair-good. Ohio State.

---



### 12: ONE MOIRE & ONE CISELE VELVET DAY DRESS, 1880s

USD 500 - 800

1 day dress of cream stamped moire w/ chemical, mm lace & chatoyant bugle beaded tulle to stock collar, at CF & cuffs, crocheted ball button closures, skirt w/ moire front panel & back panel of satin warp floral brocade on ribbed ground w/ ruched CB & mmlace applied to SSs, B 38", W 22", L 58"-64", (stained/worn underarms, shattering collar facing & hem, light stains throughout, dark stain to hem) good; 2-pc black silk faille w/ cisele silk velvet on satin ground accented w/ faceted jet button closures, black beads at CF & CB bodice, CB W bow, cuffs & front skirt panel, horizontal knife pleated H panels, B 41.5", L 19.5", skirt W 27", L 44.5"-55", (missing buttons, sm areas of shattering w/ 2.5" & 4.5" at slvs, W band torn) fair-good. Ohio State.

---



### 13: WOOL TWILL LADIES SPORTING ENSEMBLE, LATE 1890s

USD 1,200 - 1,500

Wool twill w/ printed brown stripe on green ground, notched collar, faux double breasted extending bodice w/ slit B & H pockets, rows of decorative composite buttons to back vent, modest leg o? mutton sleeve w/ stationary turn-back cuffs, gored skirt w/ controlled pleats let out into full skirt, bodice lined in blue silk taffeta, B 39", W 32.5", L 26", skirt W 29", L 35.5", (boots N/I, light underarm stains, two 0.25" holes right SH & 1 to seat, minor pilling, cluster of 0.75" repairs to lap) excellent. Ohio State Historic Costumes & Textiles Collection.

---

## Decades of Decadence



### 14: PEAU DE SOIE EVENING GOWN, 1890s

USD 300 - 500

2-pc cream silk peau de soie evening gown w/ watered silk stock collar, plastron front yoke, cuffs & W band w/ front tabs embellished w/ crystal seed beads, silvered crystal beads & faux pearls, openwork embroidery on silk chiffon at collar & overlaid at bodice front, row of tea dyed mm Val lace under B & at cuff, gored skirt w/ pleats at CB, B 38", W 22.5", L 19", skirt W 23.25", L 45", (light spot stains throughout, heavy wear to fabric at B, bead loss/wear, oxidization, 4" x 1.5" stain to seat) good. Ohio State Historic Costumes & Textiles Collection.



### 15: TWO TAFFETA DAY DRESSES, 1880s

USD 500 - 800

3-pc maroon silk taffeta c/o ext bodice trimmed w/ crimped silk & multi-colored tufted tassels, patterned silk in chinoiserie motif CF panels, wide cuff band, piping at armhole, edging of back peplum, matching bag w/ wrapped rattan handle, unpicked skirt, B 36.5", W 28.5", L 42", skirt W 57" L 44", handbag 20"x21", (lining shattering, boning missing, tiny shatter spots, bag handles chipped, skirt W band & trim removed); 2-pc grey silk taffeta c/o ext bodice w/ CF self-cover buttons & knife pleated ruffles to collar, cuffs & hem & skirt w/ 3 rows above hem, B 35.5", W 34", L 28", skirt W 62", L 40", (1" stain right slv, seam openings left slv, tiny spot stains left elbow, skirt W band removed, many sm tears W panel) both bodices good, skirts poor OH State.



### 16: BLUE SILK TAFFETA FANCY DRESS, MID 1890s

USD 500 - 800

2-pc blue silk taffeta c/o bodice w/ faux bolero finished w/ deep pennant tabs over chemical lace appliqué net stock collar, peekaboo W & fitted lower sleeve, extended & graduated bodice tabs falling over Hs all w/ French blue silk chenille applied as border & vermicelli motifs accented w/ self & velvet bows & decorative velvet covered buttons, B 38", W 26.5", L 27"-40", skirt W 25", L 40", (tiny-0.25" spot stains in lace, light trim wear, significant shattering to skirt, trim removed below W, light hem saver wear) bodice excellent, skirt fair. Ohio State Historic Costumes & Textiles Collection.



### 17: BONE SILK TAFFETA EVENING GOWN, EARLY 1860s

USD 1,200 - 1,500

2-pc bone silk taffeta gown w/ robins egg blue silk velvet ribbon trim below square neckline, to double SH cap, as panache at CB & to edge of tails & hem, blonde silk lace to neckline & as deep bodice edging, wide shaped & trained skirt w/ deep pleat over Hs & corded buckram hem facing, B 36", W 22", L 16.5"/54.5", skirt W 25", L 42.5"-56", (underarm stains, wear to trim, loose closures, lining stained, 2" seam opening to lace right B, tiny-1.5" stains, skirt lining shattering, trim worn/detaching left SS, many repairs W band, minor shattering below W band at closure) good-very good. Ohio State Historic Costumes & Textiles Collection.



### 18: BERRY CLUSTER DROUGET MOTIF DAY DRESS, 1850s

USD 500 - 800

Wool day dress printed in berry cluster drouget w/ branching parsley foliate seafoam green ground, tambour embroidered net collar, needlework CF button closures, box pleated ruffle applied to yoke & back of military shaped sleeves, piped armhole & W, full skirt w/ double box pleat at front Hs & cartridge pleated at CB, late 1850s, B 35", W 27.5", L 51.5", (5 detached buttons/2 incl, small shatter spots throughout, 1.75" tear in CF ruffle, hem unfinished/raw & uneven, light stains to underarms & hem, scattered spot stains, many small fusible patches to stabilize shatters) fair.



### 19: RESIST DYED & PRINTED WOOL WRAPPER, 1840s

USD 800 - 1,200

Resisted dyed & printed wool wrapper w/ dense wildflower motifs on royal blue ground, collar, CF opening, cuffs & faux pockets all w/ applied bands of printed wool in shades of brown, red, cream & yellow, paired silk covered button closures, piped armholes, cartridge pleated CB, lined in printed cotton, B 47.5", L 55", (shattering throughout, CF button loops worn/torn, fabric glue & lining used to stabilize shatters in CB yoke in several spots up to 6", 1" tear right end of CB W gathers & 2" tear left end) fair.

## Decades of Decadence



### 20: CHEVRON PIECED PRINTED COTTON WRAPPER, 1870s

USD 500 - 800

Cotton wrapper w/ dense floral stripe in shades of brown, taupe, red & blue, narrow self-collar & wide patch pockets at H, dyed vegetable ivory CF buttons closures, 2-pc military sleeves w/ pleated narrow self-ruffle, lovely chevron piecing at sleeves & CB, wide train, brown wool hem saver, 1870s, B 47", L 59"-68", (1 missing button, hem saver worn, worn at cuff ruffle edges, interior W drawstring casing detached for 1.5" at right end & 3" at left) very good.



### 21: TAILORED LADIES JACKET, LONDON, EARLY 1890s

USD 400 - 600

Purple broadcloth ladies jacket w/ flat woven braid appliqué edged w/ jet beading, decorative marcasite buckles, pleated black silk satin ribbon under convertible collar w/ panache at either side of CF opening & flat half bow at back w/ steel lined in black silk satin, label ???, Ladies Tailors 288 & 290 Regent St. London W", B 35", W 30.5", L 25.5", SH-SH 18", (broad fading, minor bead loss, bead disease, shattering to lining, label worn, 1" & 0.25" stains CF B, few tiny-small snacks) good. From the Collection of A.T. Jones & Sons.



### 22: FIVE PIECES LADIES OUTERWEAR, PHILADELPHIA, LATE 19TH- EARLY 20TH C

USD 300 - 500

1 black wool gabardine w/ beading & ruched ribbon, CH 44", L 25", SH-SH 17.5", (spot stains, ribbon shattering, hem falling); 1 black silk velvet w/ jet, lined in ribbon moire, SH-SH 18", L 23", (bead disease/minor loss, 2.5" trim detach, 1 bow detached/incl); 1 black basket weave w/ velvet appliqué & Corelli embroidery, collar & cuff w/ pleated silk chiffon, lined in silk taffeta, label "John Wanamaker", B 44", L 38", SH-SH 20", (2.5" hole right SH, shattering appliques, wear/stains); 1 French blue dolman cape w/ passementerie cording, CH 48", L 25.5", SH-SH 22", (wear); 1 French blue silk velvet w/ passementerie frogs & bead, lined in quilted silk taffeta, B 35", W 26.5", L 22", (1 frog detached/incl), (all w/ shattered linings) all good-very good.



### 23: THREE MATCHING WOOL HOUNDSTOOTH COATS, 1910s

USD 300 - 500

All wool houndstooth in brown & cream w/ silk velvet collars & composition buttons, tabbed patch pockets over Hs & single faux tabbed B pockets, shaped turn back cuffs w/ single decorative button: 1 double breasted coat w/ bowl shaped buttons, label "Extra Quality", B 40", L 49", SH-SH 18", (light wear, stains left pocket, collar crushed/worn, 1 button replaced, lg light spot stains throughout); 1 single breasted, B 38.5", L 49", SH-SH 17.5", (lapels discolored, few spot stain & wear spots, collar crushed, label removed); 1 double breasted coat w/ leather buttons, label "Tailor Made", B 37", L 49", SH-SH 17", (collar crushed/worn, 1 button top missing/1 detached, light discoloration/stains) all good. A.T. Jones & Sons.



### 24: TWO LINEN MOTORING DUSTERS, 1910s

USD 500 - 800

1 tan linen faux double breasted duster w/ abalone buttons, notched collar, self appliqué over SHs, full sleeves gathered to armhole, turn back cuffs, B 42.5", L 49", SH-SH 18", (tiny pulls, tiny stains to left sleeve) excellent; 1 cream linen faux double breasted duster w/ MOP buttons, under cuffs w/ single shaped patch pocket below left B, snaps for attaching gloves, deep diagonal slash pockets at Hs w/ additional opening for accessing dress pockets, back half belt, B 45", L 54", SH-SH 19", (many tiny-0.5" spot stains & few wear holes, at least 2 replaced buttons, 1" darned square left H) very good. From the Collection of A.T. Jones & Sons.



### 25: RUSSIAN IMPERIAL INFLUENCE AT-HOME ROBE, LATE 1910s

USD 1,200 - 1,500

At home robe embellished w/ silver soutache & ruched narrow silver galloon on weft brocade floral motif w/ serpentine initiation woven lace on striated ground, large embellished wooden boss buttons at CF closure & SS slits, neck opening & cuffs of silk velvet, deep pink silk satin lining w/ attached chiffon scarf terminating in silk knotted fringe, ?Edith Cotton?, B 43", L 49.5", SH-SH 23", (shattering to attached scarf, detaching at CB collar & fringe tearing, velvet trim worn, minor shattering to lining, minor detaching of cords) very good. From the Collection of A.T. Jones & Sons.

## Decades of Decadence



### 26: SOUTACHE EMBELLISHED WINTER EVENING COAT, c. 1910

USD 800 - 1,200

Wine red wool broadcloth ladies coat w/ soutache cord & flat military braid, double front collar into deep V at CB, lined in black twill silk, B 43", W 42", L 57", SH-SH 21", (holes/shattering to lining w/ some patches, cord detaching, few tiny snacks, hem altered at SS's w/ stitch lines visible) very good. From the Collection of A.T. Jones & Sons.

---



### 27: SCHIFFFLI EMBROIDERED TEA DRESS, c. 1908

USD 500 - 800

Schifflli embroidered cotton tulle in floral motif bands w/ stock collar trimmed w/ cream silk satin, Schifflli embroidered bands horizontally applied across B & broader bands from W over SHs for imitation vest, long sleeves w/ ruffle from below elbow & at cuffs, full skirt w/ scalloped hemline embroidered w/ rows of floral swags & vertical foliate tendrils, B 48", W 25", L 57", (discoloration, scattered tiny-0.75" spot stains, shattering collar facing, 1" spot stain CB W) very good.

---



### 28: LABELED PRINTED CHIFFON DAY DRESS, NEW YORK, EARLY 1910s

USD 500 - 800

1 fine blue printed polkadot on silk crepe de chine w/ broad woven satin polkadot stripe, stock collar & insert of tucked netting w/ double row of small MOP buttons, reverses of white Chantilly lace, hand woven lace stomacher, same materials as layered cuffs, black silk taffeta cummerbund W band, wired hem w/ black taffeta flounce, black silk underdress, over label "Forsythe New York", B 39", W 24", L 54", (scattered spot stains to skirt, discoloration to lace, 1 button covering & 1 button missing, many tiny tears at closures) very good.

---



### 29: TWO NET DAY DRESSES, 1910s

USD 300 - 500

1 of black netting w/ woven spot, silk satin ribbon appliqué both pleated & unpleated, lavender inserted at B, black chemical lace to neckline, underdress of black silk w/ satin polkadot pattern, B 41", W 28", L 55", (shattering/shedding to greybodice lining, metal rusting, scattered holes in net from broken brides); 1 white silk Lino weave w/ heavy chemical lace insertions to CF B, above petal scalloped cuffs & over lower skirt, B 35", W 26", L 55", (many small spot/age stains, light discoloration, tiny-sm holes in net from broken brides, 3" tear left W SS) both good.

---



### 30: TWO SILK DAY DRESSES, 1910s

USD 500 - 800

1 brown silk w/ embroidered net stock collar & faux dickie trimmed mm metallic lace, blue silk satin faux reverses & CF insertion w/ mm lame lace overlay, self-covered buttons to CF & in horizontal rows above hem & corded bias band appliqué to CF, SHs, slvs & W, B 38", W 28.5", L 59", (shattering to blue, tarnish, cuff trim worn/partially missing, few pinholes); 1 grey panne velvet w/ fuchsia silk satin bias band trim & taupe silk embroidery & rows of self-covered buttons, faux dickie & long under sleeves of silk tulle over pink china silk, B 40", W 27", L 53", (age spots/light stains, tiny-0.5" spot stains, 2" stain bodice, tiny-0.25" snacks, 1 detached/few missing beads, few missing closures, altered at W & bodice closures) both good.

---



### 31: TWO EMBROIDERED COTTON TEA DRESSES, 1910s

USD 300 - 500

1 tea dyed cotton w/ Heilmann embroidered & broderie anglaise w/ mm insertion at W, back yoke, sleeves & upper hem flounce, CB button closures, B 38.5", W 24", L 54.5", (broad hem flounce later addition, discoloration, many scattered spot stains, few wear spots/holes, 2.5" patch right underarm, two 0.5" holes right W band, 0.5" repair CB W, tear in buttonhole CB W) good; 1 Schifflli embroidered Indian cotton w/ mm ruffle to neckline & cuffs, fine tucking over SHs, fitted W band, CB button closures, B 42", W 23.5", L 49", (light discoloration, scattered tiny spot stains cluster of tiny-5" stains b/t CF W & left H, wear at closures) very good.

---



## Decades of Decadence



### 32: AWARD WINNING CB A LA SPIRITE SATIN CORSET, c. 1893

USD 1,000 - 1,500

Claret silk satin, lined in cotton twill, c. 1893, label "CB A La Spirite 286 T 19", "Awarded Gold Medals Paris Exposition 1889, Chicago 1893", B 31", W 20", H 31", L 13"-15", (significant wear to trim at edges, discoloration/minor stains, label worn, wear to satin along boning) good.



### 33: TWO RIBBON APPLIQUÉ CORSETS, 1896-1900

USD 500 - 800

1 w/ glazed twill cotton appliquéd ribbons on twill ground, laces included, c. 1900, B 29", W 22.5" H 29.5", L 10"-13", (light general stains, 1.25" stain hem, 0.25"-4" tears hem seams & bone casings, 4 missing bones, wear) fair; 1 celadon silk satin appliquéd ribbons on sateen ground, laces included, c. 1896, label "FP La Reine Du Boudoir, Style 304 Size 21", stamped "Oct 18 1896", B 31", W 21.5", H 32", L 12.5"-15", (shattering hem, wear to satin at boning) good.



### 34: TWO COTTON & ONE SATIN CORSET, 1912-1914 & 1970s

USD 500 - 800

1 cotton w/ 4 attached garters & embroidered band w/ Van Dyke edging at B, c. 1914, B 36", W 23", H 38", L 18.5"-21.5", (laces N/I, tarnish, light stains/discoloration, few pencil markings to lining) very good; 1 black satin long line corset w/ attached garters, reproduction of 1910s, mid 20th C B 27.5", W 20.5", H 32.5", L 19.75"-22", (many tiny scuffs, light wear around closures) excellent; 1 cream cotton twill w/ mm lace & ribbon insertion at B line, attached front garters, c. 1912, ?FP 64?1910-1915, B 32.5", W 18", H 32.75", L 14.5"-21", (laces N/I, 3" & 3.25" patches CB w/ new grommets, 2 missing grommets, many sm repairs CB, rust to closures, scattered spot stains) good.



### 35: EXCEPTIONAL CORDED CORSET, 1830s

USD 1,200 - 1,500

Undyed cotton sateen w/ heavily corded faux godets & partial W band, ten paired symmetrical eyelets for CB lacing, entirely done in fine backstitch, B 29.75", W 18.5", H 25.25", L 17.5", (laces N/I, light discoloration, few tiny-0.5" spot stains, 0.25" hole top of inside busk pocket, minor fraying at eyelets) very good. Ohio State Historic Costumes & Textiles Collection.



### 36: TWO CRINOLINE CAGES, 1870-1880s

USD 400 - 600

Both w/ thread covered watch spring steel hoops riveted to wide patterned cotton tape support bands: 1 larger cage, W 20.5"-26" x 35", largest hoop diameter 28", (heavy wear/stains/discoloration to canvas, hoop coverings worn/fraying, rusted hoops causing stains, shattering/wear holes to dark fabric at CF) fair; 1 smaller cage, W 33"-40", L 31", largest hoop diameter 21.5", (light discoloration/spot stains to fabric, W closure badly rusted, discoloration from rust, tarnish) good.



### 37: COLLAPSIBLE TRAVEL CRINOLINE, AMERICA, LATE 1940-1950s

USD 300 - 500

Composite crinoline cage w/ traveling case, label "Belle o' the Ball Hoop Clayton MFG Co. Atlanta, Pat. Pend.", box 8.5" x 8.5" x 4", (melted areas on lid, three 0.75"-3.75" cracks, discoloration/fading, light scratches), cage W 17"-30", L 26", (discoloration to laces & W band, holes in W band at snaps, oxidization) box fair, cage very good.



### 38: EIGHT PIECES OF LINGERIE, 1905-1920s

USD 300 - 500

1 net petticoat w/ mm fillet lace at hem, W up to 30.5", L 33", (W band worn, 1 snap bent, tiny holes); 1 step-in w/ tatted lace & embroidery, B 43", L 36", (broken brides); 1 cotton corset cover w/ mm lace, B 44", W 21"-37.5", L 18", (1" repair left W, wear); 1 cotton lawn petticoat w/ vertical lace insertions & ruffles, W 26.5", L 44", (sm repairs, 5" stain lap, 2.25" tear CF W); 1 pink modified step-in w/ mm lace & embroidery, B 36", L 30", (3.5" tear left SS, strap missing, tiny-0.5" holes); 1 step-in w/ horizontal mm lace insertions, B 38", L 32", (lap strap seat seam detached, broken brides); 1 net petticoat w/ lace ruffle, W 30.5", L 33", (no closures, repair right hem); 1 cotton step-in w/ fillet lace at neck/hem, B 36", L 37.5, all good-excellent

## Decades of Decadence



### 39: SILK BED JACKET, ROBE & TAP PANTS, 1920-1930s

USD 300 - 500

1 peach silk satin bed jacket w/ mm lace to neckline, CF opening & short sleeves, CF satin ribbon ties, CH 39", L 18", (light discoloration, 1 set of ribbons replaced, few small stains/holes); 1 cream silk crepe de chine boudoir robe w/ mm lace to neckline, CF opening, short sleeves & as tiered ruffles to patch pockets & above hem, ombre ribbon rosettes at CF, sleeves, pockets & above hem, CF snap closures, CH 46", L 44", (few sm stains, belt missing, 0.25" hole near snap); 1 cream silk crepe de chine tappant w/ mm lace insertions & trim, high open scalloped at SSs, W 34", L 16.5", (elastic shot, tiny pulls/stains); 1 peach silk tap pant w/ mm embroidery & elasticized W, W 23"-36", L 14", (pulls, stressed lap seams, 0.75" tear seat) all good-very good.



### 40: GENEROUS LOT OF LADIES UNDERGARMENTS, AMERICA, 1850s & 1910-1950s

USD 500 - 800

1 pale pink ribbed patterned silk health corset, label "Behnken Surgical Appliances", B 28.25-38", W 22-30", L 9.25-13", (spot stains, pinholes); 1 1920s silk chest reducer, label "Gossara?"; 2 bandeau, 1950s: 1 white, label "Gay Life The Formfit Co 364A36" & 1 white satin "Maidenette?", B 31-39", underB 25.5-32", (wear, tiny-0.25" scuffs left underarm); 1 white cotton, label "Masquerade MaidenForm", B 33.5-38.5", underB 29-32.5", (fraying, tiny-2.5" holes); 1 pink cotton long line bra, "Inter-lude Maidenform?"; 5 pair nylon stockings, 1 deadstock & label "Royal Family by Van Roalte, Mediums, Queen of Diamonds", 2 pair tan in orig packaging, label "Seamfree 51 Bareleg? & 2 pair dark tan, label "Long Bareleg 51?"; 2 girdles, 1950s, all good-pristine.



### 41: GENEROUS LOT SILK & RAYON BOUDOIR & UNDERGARMENTS, 1930-1940s

USD 600 - 800

12 silk & Rayon: 1 white w/ florals, B 40", W 29", L 55"; 1 pale blue w/ lace, B 36", W 29", L 52.5", (tiny holes); 1 pink w/ braided straps & belt, B 41.5", W 33", L 55"; 1 white w/ cap slvs, B 40", W 30", L 56.5"; 1 deadstock w/ orig label rayon satin pink slip w/ florals, label "Lady Love", B 34", W 30", L 41"; 1 white w/ lace inserts, B 40", W 32", L 56"; 1 white slip, B 36", W 30", L 42"; 1 peach slip w/ openwork, label "Lady Love 8 Gore Slip", B 35", W 29", L 38.5"; 1 pink w/ lace at hem & neck, B 34", W 29", L 39.5", (light 8.5" stain lap); 1 pink bedjacket, B 40", L 19", SH-SH 19"; 1 pink & cream fillet bandeau, B 38", L 9", (2" seam opening CB); 1 white bra, label "Masterbilt Bra", B 33", L 10", underB 28.5", (all w/ sm spot stains/pulls) good-exc



### 42: THREE WOOL KNIT BATHING SUITS, AMERICA, 1920-1930s

USD 400 - 800

All wool knit: 1 sapphire blue w/ white straps, 1930s, label "Jantzen The Schleisner Store, Harrisburg PA, Made in USA", unstretched B 32", W 28", H 32", L 28.5", (many tiny holes, light wear, 1" light stain seat); 2-pc short sleeve black w/ greydecorative stripe, c. 1920, both pcs label "The Continental", unstretched CH 36", W 32", L 27.5", bottoms W up to 38", L 23", inseam 11", (light stains, scattered tiny-0.5" repairs & holes); 1 black w/ integrated shorts, label "Jantzen The Schleisner Store, Harrisburg PA, Made in USA, Ladie's 40, Pat See 6, '21?, unstretched B 28", W 23", H 28", L 30", (tiny repairs seat), (all w/ light wear) all very good-excellent.



### 43: PUCCI BIKINI & COVERUP, ITALY, c. 1970

USD 800 - 1,200

Both w/ label "Emilio Pucci Florence Italy" & "100% Pure Cotton": 1 fuchsia terrycloth backed velveteen cover up w/ scrolling florals & border motifs in yellow, brown, white & shades of tangerine, CF zip closure, B 37", W 32", L 56.5", (few tiny-smallspot stains, light discoloration to lining, 1" stain right B); 1 cotton bikini in shades of lime green, yellow, grey & brown on orange ground, label "Made in Italy for Lord & Taylor", under B 28.5", L 11", W 33", L 8.25", (CB button detached, cup liningstiff, light discoloration, orange dye bleed to bottoms, elastic shot) coverup excellent, bikini good. Museum at FIT.



### 44: SIX MISSONI SEPARATES, ITALY, 1968-1971

USD 400 - 600

All but 1 w/ label "Missoni Made in Italy": 2-pc c/o cardigan deep w/ diagonal H pockets & blouse in horizontal striped w/ variegation & rib knit edgings, c. 1971, blouse B 30", L 27.5", (2 buttons chipped, 1" hole left underarm, laddering stitches to cuffs, ardigian unstretched B 36", L 30", (sm cuff stains); 1 synthetic knit skirt flame pattern, label "Rayon 100%", unstretched W 20", L 25", (1.25" seam opening hem); 1 B&W button up wool vest, c. 1968, unstretched B 30", L 18.5", (unlabeled, 0.5" seam opening CF & 1" to CB, light stain hem); 1 silk brown, blue & green chevron skirt, c. 1971, label "Maglia Knitwear Tricot", B 37", L 25.5", (2 holes right hem); 1 synthetic tricot vertical patterned striped cardigan, B 37", L 25", all very good-excellent.



## Decades of Decadence



### 45: TWO REVERSIBLE PUCCI COATS & ONE DRESS, ITALY, 1962-1968

USD 400 - 600

1 lime green & lemon yellow reversible double faced wool twill coat w/ shirt collar, decorative composite CF buttons over hidden snap closures, unlabeled Emilio Pucci c. 1962, (stains to yellow face, tiny spot stains on green, tiny pulls, 3 seam openings right SS, light discoloration) very good; 2-pc ensemble c/o reversible basket weave plaid coat in shades of brown, grey & cream w/ composition buttons as bezel to hold self appliqué, reverse in tan basket weave w/ plain composition buttons, matchings/lvless tan wool basket weave sleeveless dress w/ same buttons, c. 1968, label "Emilio Pucci Firenze, 100% Wool", reversible plaid coat B 40", W 37", L 42", dress B 35", W 30", L 41", (light wear, stain left hem, light stains dress lining) excellent. FIT



### 46: MISSONI DRESS & ENSEMBLE, ITALY, 1967 & 1974

USD 300 - 500

Both w/ label "Missoni Maglia Knitwear Tricot, Made in Italy": 1 mulberry tricot silk belted dress, knitted silk blend collar, cuffs & yoke, original belt w/ recessed striped composite buckle, c. 1974, unstretched B 40", W 45", L 49", (0.25" hole left collar, few pulls) excellent; 2-pc black silk blend ensemble in ribbed knit c/o knee length long sleeve tunic & slacks w/ faux cording over SHs & at SSs of slacks, c. 1967, unstretched B 36", W 34", L 42.5", trouser W 23.25"-36", L 41", inseam 29.5", (pulls, many pulled/undone stitches to W band, 0.75" seam opening CB inseam, label removed on pant) very good. Museum at FIT.



### 47: TWO PUCCI CASHMERE BLEND ENSEMBLES, ITALY, 1967-1970

USD 400 - 600

2-pcs in shades of yellow, brown, blue, lavender, cream & black c/o top w/ stuffed jewel neckline & glove length sleeve, matching knee length skirt, c. 1967, label "Emilio Pucci Florence Italy, 55% Cashmere, 20% Wool, 25% Nylon", B 36", L 21.5", skirt W 28", L 24", (tiny spot stains, small repairs armscye, B & right H, skirt elastic shot) very good; 2-pcs in pastel shade of pink, blue, cream & yellow c/o long sleeve top w/ square neckline & knee length skirt, c. 1970, label "Emilio Pucci, Florence Italy", 90% Cashmere, 10% Silk", B 34", L 22", skirt W 29", L 27", (few tiny spot stains, minor pilling, skirt hem unfinished, elastic shot) top excellent, skirt very good. Museum at FIT.



### 48: THREE MISSONI OUTERWEAR PIECES, ITALY, 1973-1979

USD 300 - 500

1 multicolored horizontal stripe cashmere blend sweater jacket w/ tie belt, c. 1973, label "Missoni Maglia Knitwear Tricot, Made in Italy", unstretched B 35", L 26", SH-SH 19", (stain right underarm w/ 0.75" hole, 0.5" stain right wrist, light wear at hems & cuffs, lg pull right W) good; 1 brown cashmere blend cape w/ attached scarf collar & CF tie closure, c. 1975, SH-SH 20", L 37", (unlabeled) excellent; 1 black & gray striped wool & mohair blend jacket w/ tie course & patch H pockets, c. 1977-1979, label "Missoni Made in Italy, 40% Mohair 40% Wool 20% Nylon", B 46", L 27", SH-SH 22", (light wear, minor pilling) very good. Museum at FIT.



### 49: THREE PUCCI SILK MINIDRESSES, ITALY, 1965 & 1968

USD 800 - 1,200

All w/ label "Emilio Pucci Florence Italy, 100% Pure Silk, Made in Italy": 1 long sleeved in shades of pink, yellow, cream & green w/ pleated SS for fullness & CB zip closure, c. 1965, unstretched B 36", W 34", L 36", (label detaching, few spotstains, 1" & 0.5" stains left H, 1.5" seam opening zip lining) good; 1 café au lait w/ V-neckline, glove length sleeves & empire W, c. 1968, unstretched B 31", W 26", L 36", (light underarm stains, few tiny pulls) excellent; 1 multicolored w/ V neckline & original self tie belt, c. 1965, unstretched B 32", L 37", (large tide marks across front, hem largely falling, label detaching) very good. Museum at FIT.



### 50: TWO BONNIE CASHIN WOOL COATS, AMERICA, 1960s

USD 400 - 600

1 black wool w/ black leather bindings & sweater guard, convertible collar, deep tabbed patch pockets, silk crepe lining, model reference photo included, label "Sills, A Bonnie Cashin Design", buttons stamped "Viribus Unitis 1848 FR Joseph I", B/W 44", L 38", (wear to buckles & loops for neck strap, 0.75" seam opening seat lining); 1 grey heather twill wool w/ black leather facings to collar, CF opening & cuffs, fitchet pockets, label "Sills & Co. A Bonnie Cashin Design", B 39", W 35", L 38.5", (missing top button, very light stains left cuff) both excellent. Ohio State Historic Costumes & Textiles Collection.

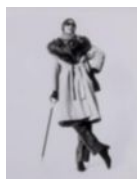
## Decades of Decadence



### 51: TWO PUCCI SILK ENSEMBLES, ITALY, 1968-1970

USD 800 - 1,200

Both silk crepe & w/ label "Emilio Pucci Florence Italy, 100% Pure Silk": 2-pcs in shades of purple, green, cream & chartreuse c/o of blouse w/ French cuff & CB self-covered button closures, matching palazzo pants, c. 1970, B 38", L 25", trouser W 27", L 40.5", inseam 27.25", (4 detached/1 missing button, few pulls, hanger imprints to W, few scattered tiny stains to pant) excellent; 2-pcs in shades of yellow & chartreuse c/o long sleeve blouse w/ fitted cuff & CB zip closure, matching palazzo pants, c. 1968, B 36", L 26.5", trouser W 24.5", L 38", inseam 28", (label discolored, seam openings left armhole, tiny-0.5" spot stains to top, tiny pulls, tiny-4" stains back right leg, stains to pant cuffs) good. Museum at FIT.



### 52: BONNIE CASHIN COAT, SKETCH, PHOTO & PATTERN, AMERICA, FALL 1972

USD 500 - 800

Suede coat w/ broad convertible raccoon fur collar, tie belt & faux fur lining, photocopy of original croquis with production notes & textile sample, model photo & original oak board pattern w/ production notes, fall 1972, label "Sills, A Bonnie Cashin Design", B 51", L 44", SH-SH 20", (0.5" tear left SS, light wear/discoloration, 1" & 0.5" spots of entirely worn suede left SS above hem, light stains to SHs) good; 1 matching pattern. Ohio State Historic Costumes & Textiles Collection.



### 53: MISSONI SILK ENSEMBLE, ITALY, 1979

USD 800 - 1,200

2-pc silk in multi-colored abstract interrupted plaid on black ground c/o long sleeve shirt w/ horizontal tucks across front & bias cut floor length double circle skirt w/ inset H pockets & fitted W band w/ single button & sip closure, unlabeled Missoni 1979, skirt label "Silk 100%", B 38", W 35", L 26", skirt W 26", L 42", (tiny pulls throughout, light 1.5" & 2.5" stain clusters CF W, 2 large narrow pulls left back blouse W) excellent. Museum at FIT.



### 54: FIVE MISSONI SWEATERS, ITALY, 1970-1980

USD 300 - 500

All w/ label "Missoni Made in Italy": 1 blue wool & mohair blend long sleeve top, c. 1970, unstretched B 36", W 23", L 24.5", (lg pull CB); 1 mohair & nylon blend cable knit sleeveless sweater vest, c. 1976, "80% Mohair, 20% Nylon", unstretched B 39", W 22.5", (few pulls); 1 dark blue short sleeved synthetic blouse w/ peplum, cylindrical clear plastic buttons, c. 1980, unstretched B 38", W 24", L 23", (3.5" & 1" stains B, 1.5" stain W, pulls); 1 tan knit wool sweater, c. 1970, B 37", W 22", L 25", (few tiny pulls); 1 pale green knit sweater wool & synthetic blend, c. 1970, unstretched B 32", L 24", (0.25"-1" stains, few pulls, pilling throughout) all good-excellent. Museum at FIT.



### 55: CLAUDE MONTANA CAR COAT, PARIS, LATE 1980s

USD 300 - 500

Black wool blend coat w/ standing cross over collar, single button at left breast, raglan sleeve w/ single button at cuff, quilted twill silk lining, label "Claude Montana, Made in Italy", CH 44", L 35.5", (buttonholes at CH worn) excellent.



### 56: ONE LACE RUN & ONE BOBBIN LACE SHAWL, 1840s

USD 300 - 500

1 white semicircular hand embroidered lace run net shawl, Wd 79", L 14"-30", (0.25"-0.5" wear spots in net, tiny pulls to embroidery); 1 applied bobbin lace on cotton tulle shawl or for hat or hair ornamentation, Wd 3.75"-16", L 89", (2 tiny spot stains 1 end, few tiny-0.25" holes to 1 end) both excellent.



### 57: TAMBOUR & LACE RUN SHAWLS, 1850-1860s

USD 500 - 800

1 hand embroidered lace run net shawl, 84" x 74", (few tiny holes from broken brides) excellent; 1 tambour embroidered net shawl, 110" x 60", (repair near center, tiny-0.25" holes from broken brides) very good.

## Decades of Decadence



**58: CHANTILLY LACE CAPE, 1860s**

USD 600 - 1,200

Long black demilune Chantilly cape w/ dyed ostrich feather collar over pleated black chiffon, SH-SH 20", L 40-47", (lace shawl modified c. 1900 w/ added collar, feathers worn, few scattered 0.25"-0.5" holes at SH, many scattered 0.25"-1.25" holes to left side) good. Museum of History & Industry.

---



**59: TWO ASSUIT SHAWLS, EGYPT, EARLY 20TH C**

USD 600 - 800

Both silver metallic on black cotton ground: 1 w/ diamond pattern, 26" x 88", (minor tarnish); 1 w/ arrow pattern, 28" x 78", (minor tarnish, pulling at edges) both excellent.

---



**60: PERUGIA TOWEL, ITALY, 18TH C**

USD 1,000 - 2,000

Hemp Perugia towel w/ indigo dyed cotton in confronted & adorsed mythical beast motifs, probably 18th C in 15th C style, 22" x 80", (fading to blue thread, short ends raw, scattered tiny-0.75" holes at edges, light staining, 0.5", 1" & 2" tears 1 edge) good. Ohio State Historic Costumes & Textiles Collection.

---



**61: MASSIVE LENGTH OF BROCADE YARDAGE, 1920s**

USD 500 - 800

Warp patterned ombre floral brocade in 18TH C influence spot flora motif separated w/ miniature floral chains, 1920s, 51.5" x 10+ yards, (29" x 35" rectangle cut from 1 corner, some pulls/fraying to edges, ends raw) excellent. Ohio State Historic Costumes & Textiles Collection.

---



**62: EIGHT FORTUNY SAMPLES, ITALY, 1957-1980**

USD 800 - 1,200

8 Fortuny long staple cotton samples, 5 w/ label "Made in Italy Mariano Fortuny Venezia Depose": 1 "Cherubian Blue, Green & Silver Piece no. 3, Fortuny Inc. 1960", 56.5"x57.5"; 1 "Barberini Burnt Apricot & Silver, Fortuny Inc. 1958", 56.5"x42"; 1 "Lamballe Charcoal Black & White w/ Grey Stripe & Red Overlay, Fortuny Inc. 1958", 59"x44.5"; 1 "Lamballe Aubusson Rose & French Blue w/ Blue Stripe, Fortuny Inc. 1957", 56" x 45", (dye bleeds); 1 "Impero Gold", Fortuny Inc. 1980", 56"x80" (sm spot stains); 3 lengths of matching blue/green w/ silver, 24.25" x 28.25", 48" x 28" & 48" x 29", (no tag info, stitch marks to edges); 1 dark brown & cream, 57" x 27", (no tag info, staining), (all w/ raw & unevenly cut ends) all good-very good. Ohio State.

---



**63: JACQUARD WOVEN PAISELY SHAWL, 1850s**

USD 500 - 800

Square wool & silk jacquard woven paisley, integrated black octagonal center, 69" x 69", (shattering center of star, star backed w/ black fabric, fringe edingg very worn, fading 1 side w/ two 0.5" holes, sm white spot stains center) fair-good.

---



**64: JACQUARD WOVEN PAISELY SHAWL, 1860s**

USD 500 - 800

Wool & silk jacquard woven paisley w/ large black center, 64.5" x 135", (wear spots in solid red areas, fringe wear/loss, 0.5" hole in center of black area) good-very good.

---

## Decades of Decadence



### 65: TWO GODEYS LADYS BOOKS, PHILADELPHIA, 1859 & 1868

USD 300 - 500

1 Godey's Lady's Book & Magazine, Volume LVIII- January - December 1859, 6.5" x 9.5" x 3", (Jan plate missing, cover worn, spine taped, foxing/discoloration/stains to pages, chipping & creasing to edges) cover poor, interior very good; 1 Godey's Lady's Book & Magazine, January 1868, Volume LXXVI- No. 451 through December 1868 Volume LXXVII- No. 462, 6" x 9.375" x 2.625", (Feb & Sept plates missing, cover worn/detaching & taped, pages detached w/ heavy creasing/wear, chipping & foxing) fair.

---



### 66: ONE BELLE ASSEMBLEE & ONE GODEYS, LONDON & PHILADELPHIA, 1847 & 1860

USD 300 - 500

1 Belle Assemblee w/ 2 plates present for every month, January - December 1847, 6.375" x 9.875" x 2.5", (cover worn, spine detaching & taped, foxing/stains to pages, minor chipping) cover poor, interior good; 1 Godey's Lady's Book w/ allplates present, January - December 1860, 6.5" x 9.5" x 2.75", (cover worn, spine detaching & taped, foxing/stains/discoloration, minor chipping) cover fair, interior good.

---



### 67: THREE WOVEN STRAW HATS OR BONNETS, 1870s

USD 300 - 500

1 straw & fine twisted woven cord w/ brim lined in half silk over wire, silk flowers, petals & leaves to brim & nape, Wd 9", Ht 9.5", depth 2.5", (areas of bent/broken straw, florals worn, light wear/discoloration to lining) good; 1 woven straw w/ silkvelvet & cloth braid, brown silk moire ribbon bow at CB under heart shaped opening for integration w/ hairstyle, Wd 6", Ht 8.5", depth 5", (shattering to bow & wire covering, florals worn/fraying, areas of bent/broken straw, velvet worn); 1 straw & horsehair crowned w/ panache composed of black silk tulle, Chantilly lace & silk floral, Wd 7", Ht 8", depth 6", (misshapen, lining shredded, ties very worn, tiny spot stains to florals, edges fraying, brim wire exposed right edges) fair-good.

---



### 68: TWO BONNETS, 1850-1860s

USD 400 - 600

1 black silk taffeta in ribbed calash form w/ stamped & pressed velvet florals inside brim & along base over black lace flounce, c. 1860, Wd 11", Ht 14", depth 7", (light wear to lace & florals, ribbon trim on crown very worn, tiny holes at bones) verygood; 1 ecru mm lace over chiffon w/ wired buckram based, applied fringe & brim w/ silk florals, inner brim w/ cloth buds, Wd 8", Ht 11", depth 5", (flowers worn w/ some stains, trim worn, staining/shattering to ties, inner brim fabric worn) fair.

---



### 69: THREE STRAW OR SILK BONNETS, 1870-1880s

USD 300 - 500

1 black ribbed silk in draped collapsed box w/ jet beading, label "McDonnell Baltimore, Faubourg Paisonniote Paris", Wd 6", Ht 7", depth 4", (label & brim fabric worn, bead loss, bead disease to lg beads, tiny wear holes crown, tiny holes & 0.5" tear toribbon) good; 1 black varnished straw w/ silk chiffon & black & white silk ribbon, cascading silk floral tendrils, jet beaded medallion at CB w/ rhinestones, Wd 8", Ht 10", depth 3.5", florals worn/discolored, bead disease/minor loss, tie ends rawnnet at brim worn/torn) very good; 1 wired dyed straw w/ glazed fish scale sequins, silk flowers & silk velvet ribbon, Wd 7", Ht 7.5", depth 4", (florals worn/detaching, sequins warped, velvet & straw worn, wire poking from left brim) fair-good.

---



### 70: HANAN & SONS GENTS SHOES, NEW YORK, 1910s

USD 500 - 800

Black leather mans ankle shoes w/ incorporated glass button up spats, label "Hanan & Son, New York", Ht 6.25", Wd 3.75", L 12", size 11, (leather creasing, soles worn & peeling at toes, minor scuffs) excellent.

---

## Decades of Decadence



### 71: THREE PAIR DAY OR EVENING SHOES, 1890-1920s

USD 300 - 500

1 pair day pumps w/ flocked & painted leather pinks, glazed leather worked edging, 1920s, Ht 5", Wd 2.75", L 9.75", size 7, (sock liners worn, general wear, flocking flaking off); 1 pair white kid evening pumps w/ flat square beaded fauxbuckles, late 1910s, Ht 5.5", Wd 3", L 11.5", size 8.5, (tiny-1.25" stains to heels, possible paint spots around instep & sole); 1 pair white kid leather evening slippers w/ half silk fan pleated festoons & faux pearl centers, c. 1890, Ht 3.5", Wd 2.5", L 9.5", size 5, (fabric shattering, wear, elastic shot, many tiny holes to leather at heels) all good, (all w/ worn soles)



### 72: COLLECTION OF EVENING ACCESSORIES, FRANCE, 1910-1920s

USD 400 - 600

1 chatelaine bellows pleated leather pouch w/ deep relief cast plaques in pastoral hunt scene & mounted lovers, 5.5" x 11", (wear/tarnish to metal, some wear/some shattering to lining, wear to leather); 1 crochet bag w/ faceted bronze beads & ball drops, 7" x 12", (minor bead loss); 1 silk tambour embroidered evening bag in Persian motif lined w/ silk moire, ?Made in France?, 7" x 4.75" x 1.5", (lining discolored); 2 faceted beaded necklaces, 1920s, one 35" x 0.5", (1 incomplete repeat of beading, near center) & one 25" x 0.5"; t/w 1 beaded dress appliqué, 16.5" x 1.75", (few pulls to thread) all very good-excellent.



### 73: LARGE LOT OF TRIMS, APPLIQUÉS & YARDAGE, 1890-1930s

USD 300 - 500

L range 1.25"-7+ yards, Wd range 2"-8": 1 black lace fringe, (messy, small holes, tiny pulls); 1 dark grey beaded trim yardage, (cut in 2, minor bead loss); 1 metallic yardage w/ glass drops, (minor tarnish); 1 metallic lace trim, (broken brides); 1 bluerhinestone yardage, (stone loss); 1 spool blue/purple threaded beads, label "Collingbourne's Fast Dye Purse Twist 150 yards"; 1 silver/gold wrapped wire of leaves, label "Made in Italy", (some pulls); 1 black/gold wrapped wire of sprigs, label "Made in France", (untwisting ends); 2 red rhinestone panels, (minor stone loss/rust); 1 looped French jet fringe, (minor bead loss, 0.25" tear edge); 1 lattice design French jet fringe, (bead loss), (most w/ raw ends) very good-excellent.



### 74: COLLECTION OF CHERRY MOTIF VINTAGE JEWELRY, 1930-1950s

USD 300 - 500

1 bar pin w/ 5 leaves & 4 cherries, 4" x 5", (1 cherry missing); 1 w/ pair of cherries & leaves, 1.75" x 2.75"; 1 w/ 2 leaves & 5 cherries on elastic stems, 3" x 3", (carving on back, elastic fraying); 1 bow w/ 2 dangling hearts, 3" x 3.5"; 1 "wood" disc w/ 6 cherries, 2.5" x 3"; 1 clear butterfly w/ 8 berries, 3.75" x 2.75"; 1 large red bow w/ 9 berries, 2.5" x 3.75", (pin rusted); 1 large heart w/ 10 berries, 2.25" x 3.25", (pin rusted); 1 fan shaped w/ 9 berries, 3.25" x 3"; 1 cornucopia w/ 9 berries, 3" x 3.5"; t/w 4 chain necklaces (all w/ light scratches/scuffs, lightly dirty & w/ flaking/chipped coating) all fair-good.



### 75: EIGHT LEA STEIN BROOCHES, PARIS

USD 500 - 800

All signed, "Lea Stein Paris": 1 pink Corolle Flower Lady, 1.75" x 2.25"; 3 black & white: 1 w/ chevron, 3.25" x 0.75", (bubbling on back); 1 black & white parallelogram, 3.25" x 0.75"; 1 black & white rectangular Art Deco building, 1.25" x 1.75"; 2 w/ double leaf motif: 1 teal & white green diamond center, 5.75" x 1" & 1 sapphire blue & black w/ white center, 6.25" x 1"; 1 turquoise Gomma the sleeping cat, 4.25" x 2"; 1 Romeo the Cat face in teal & gold, 4" x 2", (0.5" crack near left eye), good, others excellent (all w/ light scratches/scuffs)



### 76: JAE & VINTAGE BANGLES, AMERICA

USD 400 - 600

All w/ Wd range 0.625"-1.5", inner circ. range 7.75"-8.5": 2 signed ?JAE": 1 translucent blue w/ blue & teal dots & 1 translucent pink w/ pink & purple dots; 3 translucent w/ silver metallic frames: 1 blue w/ polkadot frame, 1 red w/ polkadot frame, 1 green w/ undulating abstract frame, (all w/ tarnish to frames); 1 black, cream & cranberry marbled, signed but illegible; 1 thin white w/ blue lozenge motif; 1 aqua & black striped; 1 magenta & black striped, (all w/ light scratches/scuffs, tiny chips & divots) all very good-excellent.



## Decades of Decadence



### 77: SHULTZ, PANTTI, TERESA & VINTAGE BANGLES, AMERICA

USD 500 - 800

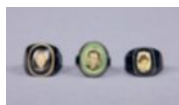
All w/ Wd range 1"-1.375", inner circ. range 7.875"-8.5": 3 w/ square motif in black border & signed ?Pantti?: 1 w/ opaque lime green, 1 w/ translucent cherry red, (2" uneven join) & 1 w/ translucent green, (4" uneven join); 2 signed ?Teresa?: 1 marbled orange w/ marbled red & black dots & 1 marbled green w/ marbled red & black dots; 1 marbled black & translucent yellow checkerboard signed "Shultz", (interior crazing to 1 square); 1 asymmetrical black & green; 1 bifurcated half black, half dark green; 1 Chinese carved & red painted wood (minor cracking inner rim), (all w/ light scratches/scuffs) all very good-excellent.



### 78: FIVE RAFIA & BOSSA BANGLES, PARIS

USD 400 - 600

All signed "Rafia & Bossa Paris" w/ Wd range 1.25"-1.375", circumference range 7.875"-8": 3 w/ checkerboard motif: 1 pink & black, 1 lavender & black & 1 blue & black & 2 w/ bifurcated zig zag motif: 1 aqua & black, 1 black & pink, (all w/ light scratches/scuffs, some w/ small divots & dark markings) all very good-excellent.



### 79: THREE PRISON RINGS, AMERICA, 1930-1940s

USD 500 - 800

1 w/ young woman in green chatoyant frame, Wd 0.125"-0.75", inner circ. 50 mm, size 5.5; 1 w/ young man in white hat, Wd 0.125"-0.75", inner circ. 55 mm, size 7.5; 1 w/ man in black hat, Wd 0.125"-0.625", inner circ. 53 mm, size 6.5, (all w/ light scratches) all excellent.



### 80: TWO BONE BUSKS, LATE 18TH-EARLY 19TH C

USD 1,200 - 1,500

1 bone busk w/ floral carvings, late 18th C, 0.75" x 7", (discoloration/stains, many scratches, chipping to edges); 1 unadorned busk, early 19th C, 1" x 10", (dark marks to edges, light stains/discoloration, many scratches) both very good.



### 81: FOUR PAIRS OF EVENING & WEDDING SHOES, AMERICA, 1910-1920s

USD 300 - 500

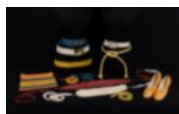
1 brown patterned silk w/ lame brocade on satin ground, gilded kid straps w/ rhinestone buckles, 1920s, label "Stern Brothers New York", Ht 4.75", Wd 2.75", size 7, (soles & toes worn, ink to lining, wear spot right shoe) good; 1 pale pink satin pumps w/ silk & chiffon ruffled trim to vamp, label "Best & Co", Ht 4.5", Wd 2.75", size 7.5, (left embellishment detached, few small stains/scuffs) good; 1 pale pink evening pumps w/ Louie heel & flat bow w/ rhinestone buckle, 1910s, label "EJ Denning & Co New York", Ht 4.25", Wd 3", size 7.5, (light wear/stains, bows fraying) very good; 1 white silk satin w/ beaded small flat satin bow, 1910s, label "B. Altman & Co. Paris New York", Ht 4", Wd 3", size 7.5, (tiny-1.5" stains, light sole wear) excellent.



### 82: TRAVELING BOUDOIR DRESSER SET, LATE 1930-1940s

USD 300 - 500

Pink & silver travelling toiletry set w/ faux enameled surfaces underlaid w/ gold chromium handles, lid, edges & pressed glass, box 25.5" x 12.5" x 3.25", (spine broken, covering peeling, 1 lid card torn, wear to lining), accessories in cardboard caselined w/ pink & blue twill rayon: 1 brush, 1 comb stamped "Made in USA", 1 scraper, 1 file, 1 hand mirror, 1 large glass jar w/ lid, 2 identical small glass jars, 1 perfume bottle, 1 floral mirror, 1 empty frame, 1 frame w/ images, (all w/ metal tarnish, scratches/scuffs/divots, general wear, squeezer on perfume dropper stiff & broken off, brush w/ few bent/broken bristles, residue to floral mirror, frame stands torn off) all poor-good.



### 83: BONNIE CASHIN & LEATHER ACCESSORIES, AMERICA, 1960-1970s

USD 400 - 600

1 pair orange leather ballet flats, label "'On Stage' Capezio", size 9, (heavy wear, dirty, discoloration); Bonnie Cashin leather & suede belts: 1 off-white belt w/ round buckle, W up to 27.5", L 31.5", (small stains); 1 yellow/green belt, Wd 2", L 44", (buckle missing); 1 multicolored striped knit bag hat, brim circ. 25.5", Ht 12", (tiny hole 1 edge); 1 blue belt w/ clasps, Wd 2.25", W up to 28.75", L 35", (oxidization); 1 off-white belt w/ rectangular clasp, Wd 2", W up to 33.5", L 34"; 1 cream knit head wrap w/ leather strap, Wd 0.75"-5", L 69.75", (ties worn); 1 maroon suede head wrap, Wd 0.5"-4.75", L 78.75", (tiny spot stains); 4 tie belts, Wd's 0.5"-1", L's 49.5"-71", (yellow belt cut 1 end), (most w/ light wear/discoloration) good-excellent.

## Decades of Decadence



### 84: GROUP OF SILK ACCESSORIES, 1840-1920s

USD 300 - 500

1 pair pink silk taffeta evening straightens, 1850-1860s, Wd 2.5", L 9", size 4.5, (wear, shattering to topline, 1" bound off cut w/ elastic at CB heel to widen, 2 repaired shatters); 1 patterned silk bonnet w/ grosgrain panache, 1880s, 9" x 4" x 10", (shattering to ribbons, few pulls, wear to back panel); 1 satin boudoir pillow, 1920s, 19" x 12" x 4", (light discoloration, wear/fraying to applique); 10 assorted handkerchiefs incl Madeira & tatting, handkerchief pillow w/ silk ribbon flowers & stenciling, Wd range 8"-8.25" x 14"-14.25", (scuffs to satin, spot stains, minor fraying, lame tarnish); t/w black jacket w/ rhinestones, all fair-excellent



### 85: GENEROUS LOT OF LACE ACCESSORIES, 1860-1920s

USD 400 - 600

1 white & pink handkerchief, label "Made in England Liberty of London", 17"x17"; 1 World's Fair handkerchief, label "New York World's Fair 1939", 11.75"x11.75"; 16 assorted handkerchiefs, Wd range 7"-13", L range 7"-12.75", 1 Tenerifeembroidery & ribbon work capelet, neck circ. 12.75", L 11"; 1 Nandutti hand made collar, 22.5"x1.5"-6"; 1 Irish crochet collar, 13.5"x15.5", 1 foldover tambour on net, 27.5"x12"; 1 set mitts & handkerchief, label "The Belgian Lace Shop", mitt L 15.75", handkerchief 12"x12"; 1 tape & chemical lace headpiece/lapets, 16.75"x5.75"; 1 tape lace capelet, 1890s, neck circ. 13.75", L 12"; 1 Heilmann embroidered, 1880s, Wd 4-11.5", L 10.4", (all w/ scattered holes/stains/pulls/discoloration) all fair-excellent.



### 86: THREE BROCADED SILK & METALLIC OBI, 20TH C

USD 300 - 500

1 pink & silver w/ floral & avian motifs w/ original packaging, 12.25" x 158", (tiny spot stains/pulls, one 0.5" spot stain, light discoloration); 1 cream w/ gold, silver, red & orange butterflies, floral & leaf motifs, 8.25" x 130.5", (tiny pulls, tiny-0.25" spot stains); 1 cream w/ multi-tone gold foliate mandala motif, 12.25" x 171", (light discoloration/spot stains, few tiny pulls) all very good.



### 87: BUDDHIST MONKS HAORI, JAPAN, 1780-1850

USD 1,200 - 1,500

Buddhist monk's haori of orange twill weft patterned silk w/ stylized mon & scrolling florals, lined w/ starched cotton, CH 60", L 34", (general fading/discoloration, lining stained, panel added at CB neck for display, tiny-0.5" holes CB collar) good. Ohio State Historic Costumes & Textiles Collection.



### 88: BUDDHIST KESA ROBE, JAPAN, 18TH C

USD 1,200 - 1,500

Kesa priest's robe pieced patchwork of brocaded silk, Japan, 42" x 61.5", (many small-6" tears at edges & folds, discoloration & 1.5" inking to lining, scattered 1"-2.5" repairs) fair. Museum of History & Industry.



### 89: TWO PAIRED MANDARIN SKIRTS, CHINA, LATE 19TH C

USD 1,200 - 1,500

1 chartreuse patterned paired skirt front & back panels embroidered in blue ombre silk floss in chrysanthemum & floral motifs w/ butterflies in shades of brown, blue & cream, pleated side panels w/ vining florals hidden inside pleats, W panel Wd 48", L 36", (areas of discoloration, dye bleed from embroidery floss to ground, few scattered spot stains) very good; 1 Imperial yellow silk skirt embroidered in satin stitch and Peking knot w/ chrysanthemum, & Phoenix motifs, spot floral & butterfly motifs to side panels, W panel Wd 42", L 34", (stains/discoloration, few scattered holes, embroidery loss, 1.75" area of shattering at left most panel, 0.75" flap over hole in right panel, many tiny-0.5" spot stains, inking outer W band) good.



### 90: TWO EMBROIDERED SILK ROBES, CHINA, EARLY 20TH C

USD 1,500 - 2,000

1 dragon robe in seafoam silk satin w/ couched metallic & satin stitch embroidery, 1920-1930s, CH 42", L 48.5", (many pulls, shattering at right SH & across left front, shattering/tearing neckline, 3" hole right sleeve, SS modification w/ embroidered band, sleeves hemmed to shorten) fair; 1 woman's Chinese robe of blue silk satin embroidered w/ satin stitch in auspicious symbols & florals, cuffs in Peking knot, CH 54", L 44", (very light stains throughout, few tiny pulls) very good. Louisiana State Museum.

## Decades of Decadence



**91: EMBROIDERED SILK ROBE, CHINA, LATE 19TH-EARLY 20TH C**

USD 800 - 1,200

Navy silk satin robe embroidered in ombre satin stitch & Peking knots in floral medallions, wave & cloud motifs w/ superimposed peonies & daisies, CH 60", L 57", (tiny pulls & spot stains, 3" stain right CF, pilling/wear to lining) excellent; t/w navy blue robe, China, CH 60", L 57", (tiny pulls & spot stains, 3" stain right CF, pilling/wear to lining) Louisiana State Museum.

---



**92: CLOUD COLLAR & EMBROIDERED PANELS, CHINA, LATE 19TH - EARLY 20TH**

USD 800 - 1,200

1 satin stitched cloud collar lined w/ silk paper, Wd 26", L 13.5" w/ 7" fringe, (shattering to collar & trim, fringe messy, lining torn/shattered, missing metal discs, trim detaching/missing); 6 textiles, China, 1st half of 20th C: 1 larger panel on teal ground, 38" x 16", (1 end raw, stains to left side); 1 bias warp face brocade & ribbon cream ground w/ Peking knot, 21" x 12", (stains/discoloration); 1 of gauze ground w/ Peking knot & gold couchwork, 22.5" x 7.5", (stains/holes to backing, wear/discoloration); 1 sleeve cuff w/ orange ground, 6" x 17.75", (staining); 1 sleeve cuff w/ peacocks, 23" x 11", (discoloration/dye bleed), (all w/ shattering edges) fair-good. Louisiana State Museum.

---



**93: MARIGOLD PATTERNED SILK LOUNGING ENSEMBLE, OTTOMAN**

USD 400 - 600

2-pc ensemble in patterned marigold silk satin w/ woven cloud patterned undulating floral motif c/o of jacket & balloon shalwar w/ black silk satin trim, late Ottoman Empire, jacket B 46", W 38", L 19", balloon shalwar ungathered W 89", L 42", (few tiny pulls & spot stains, 1" stain left sleeve, 0.5" hole back right sleeve, sleeves taken in, W gather tie missing, 1.5" unbound section left cuff) very good.

---



**94: THREE COTTON EMBROIDERED REGIONAL GARMENTS, MID 20TH C**

USD 400 - 600

1 heavy cotton tunic w/ geometric wool embroidery primarily in cross-stitch in black, maroon, blue & orange to collar, CF neck opening, sleeves & vertical back panels, above hem embroidered w/ chainstitch circles in brown, green & pink, hem in Armenian needlelace, B 36", L 44", (light discoloration, tiny spot stains, two 1" stains lap); 1 cotton shawl w/ woven ends & long twisted wool fringe in orange, brown & cream, edges embroidered in double running stitch, 11" x 112", (minor fringe loss); 1 cotton twill vest embroidered panels at front SHs edged w/ thick over-spun wool fringe in red, orange & black, inserted side shaped gussets, bottom & side of godets w/ same fringe, open B 34", L 34", (messy fringe, staining) all very good-excellent. Ohio State.

---



**95: UNUSUAL EMBROIDERED BRIDAL VEST, TUNISIA, 19TH C**

USD 500 - 800

Open front bridal vest w/ SH extensions embroidered w/ silver sequins & bullion on unusual blue cotton velveteen ground, woven decorative buttons to B line, CF hook & eye closures, Tunisia, 19th C, B 32.5"/36.5", L 12.5", (tarnish, minor sequin loss, few missing neckline baubles, light wear/fading, CF closures rusted, light wear to velvet) good.

---



**96: THREE GENTS WOOL SMOKING JACKETS, AMERICA, 1890s**

USD 500 - 800

1 navy broadcloth w/ striped shawl collar, cuffs & pocket tabs, braided frog closures, CH 45", L 30.5", (trim very worn/tearing at hem, tiny scattered snags/holes, small-0.5" holes cuffs & left SH, label removed, cuff buttons worn); 1 grey/green broadcloth w/ tattersall shawl collar, cuffs & pocket tabs w/ corded edging at front closures, label "Schoonmaker & Co. Paterson N.J.", CH 40", L 29", (scattered tiny-0.5" snags, label & trim worn, back collar loop torn, 1" & 1.5" stain to back of 1 slv); 1 dark green broadcloth w/ striped navy shawl collar, cuffs & pocket edging, free front, label "Wm. H. Lohmeyer Baltimore", CH 40", L 30.5", (trim worn, CF closures missing, tiny-0.5" snags, scattered small-1" light marks) all good-very good. A.T. Jones

---

## Decades of Decadence



### 97: TYROLEAN JACKETS & SUIT, ENGLAND & MUNICH, 1930s

USD 300 - 500

All wool in typical shade of loden w/ stag horn buttons & green wool accents & facing: 1 double breasted jacket, CH 44.5", W 43", L 31", (tiny-0.25" wear holes, shattering lining); 1 dark grey w/ red linings, CH 31.5", L 20", (sm holes left slv, spot stains/tiny holes collar lining); 2-pc suit, label "Chas. H. Fox Ltd. 184 High Holborn W.C.1 No 179", CH 43", W 40", L 30", trouser W 34", L 47", inseam 34.5", (buttons chipped, 0.25"-0.5" partially repaired holes cuffs, sm hole collar, up to 4.5" repairs inseams, cuffs worn, 3.5" repair seat, 1.5" seam opening CB W); 1 light grey, label "Lodenfrey Munchen Reine Welle", CH 31.5", L 18", (0.25" holes); 1 child's very dark grey, CH 33.5", L 20", (all w/ light wear) all good-excellent. A.T. Jones & Sons.



### 98: FOUR WORKMAN'S COVERALL COATS, 1940s

USD 300 - 500

All cotton twill & w/ CF button closure & 3 patch pockets, flat fell seams, unlined: 1 khaki-tan w/ silver snaps, snaps stamped "Fit & Wear", CH 55", L 48", (many tiny-sm spot stains, 0.5" hole right pocket, 1" hole & stain seat); 2 matching grey/brown, label "United Garment Workers America", buttons stamped "Cantripum H.C. & M Co. Brattleboro VT", CHs 44", Ls 46", (light discoloration/wear, 1 w/ few 0.25" wear holes & 0.5" hole back right SH, 1 w/ 1.5" wear hole left armscye, tiny pulls, discoloration/creasing where hem altered); 1 light grey-tan w/ silver snaps, snaps stamped "Fit & Wear", CH 46", L 44.5", (fraying armscyces & right SS, many tiny-ig spot stains throughout) all good-very good. From the Collection of A.T. Jones & Sons.



### 99: FIVE WORK OR SPORT SHIRTS & JACKETS, AMERICA, MID 20TH C

USD 300 - 500

1 white w/ 3 patch pockets, stamped "Prop. Of Bugle Coat, Apron & Linen Service Baltimore, MD", CH 40", L 21", (stains/discoloration, wear to neckline & cuffs); 1 black w/ embroidered unicorn, 1950s, label "Sportswear by Jupiter, 65% Dacron, 35% Cotton", CH 43", L 24", (embroidery worn, label faded); 1 blue & white striped cotton work shirt, CH 48", L 27.5", (few light tiny-1.5" spot stains, fraying top edge button band, 0.75" & 1" stains left slv); 1 navy waterproof jkt, "Cravenette" treated, CH 42", L 22", (light discoloration/scuffs); 1 bleached white w/ 3 patch pockets, stamped "Prop. Of Baltimore Towel Supply & Ldry Co." CH 42", L 22", (tearing at few buttons, tiny-0.5" spot stains, 2" stain right SH) all good-excellent. A.T. Jones & Sons.



### 100: PLAID WOOL ZOOT SUIT, 1940s

USD 1,200 - 1,500

Zoot suit of plaid twill woven wool w/ intentionally offset stripes at seams on sleeves, CB & on trousers, jacket w/ notched lapel, padded SHs, inset B pocket, deep horizontal slash pockets, full trousers pleated into fitted high W, SS pockets, narrow extended hem to form bag, CH 47.5", W 44", L 37.5", pant W 36", L 46", inseam 33", (fraying collar seam, 0.5" & 1.25" repairs left front H, 1" repair left CH pocket, 0.5" partially repaired hole left slv, two 0.25" wear holes SH blades, 1.75" seam opening right armscye SS & 2" at left, lining stained/worn, 5" & 1" repairs at seat, 0.75"-4" repairs above pant cuffs, tiny repairs at W, scattered sm holes/wear spots/pulls) both fair-good. From the Collection of A.T. Jones & Sons.



### 101: WHITE COTTON SURGICAL GOWN, 1950s

USD 300 - 500

White surgical gown w/ band collar, broad yoke, single B pocket, CB tie closures, fitted W band into CB tie, label "Medium MD-USA?", size 16, CH 54", L 56.5", (light wear, few spot stains & tiny pulls, 1.5" & 2" light stains at seat) very good. From the Collection of A.T. Jones & Sons.



### 102: ROSETREE HUNT RIDING PINKS, ENGLAND, EARLY 20TH C

USD 300 - 500

Riding pinks c/o cutaway coat in scarlet wool broadcloth w/ decorative Rosetree Hunt? brass buttons based on Order of the Garter motif, cream broadcloth breeches w/ bone button fly front, for suspenders at W & at boot extensions, coat button backs stamped "Wn Jones Co. 236 Regent St. London?", CH 40", L 32.5", (many tiny-0.5" holes in lining, tarnish, scattered tiny hole & spot stains, few 0.25"-0.5" wear spots back & sleeves), britches W 37", L 39.25", inseam 26", (wear/discoloration, several broken/chipped buttons, many tiny-1" snags, lining mostly missing, few tiny holes) both good-very good. From the Collection of A.T. Jones & Sons.

## Decades of Decadence



### 103: TWO RIDING ENSEMBLES, ONE BELONGING TO MIRIAM JAY WURTS (ANDRUS) 1932&1910

USD 400 - 600

2-pc burgundy & cream herringbone ladies riding ensemble c/o jacket & jodhpurs, c. 1932, label "Abercrombie & Fitch Co. NY", B 38.5", W 36", L 31", pant w/ 2-pc burgundy & cream herringbone ladies riding ensemble c/o jacket & jodhpurs, c. 1932, label "Abercrombie & Fitch Co. NY", B 38.5", W 36", L 31", pant w/ "Miriam Jay Wurts? tag, W 27", L 35", inseam 24.75", (few tiny-0.25" holes in collar, shredded pocket linings, fading discoloration to pants, tiny holes & spot stains, 1.75" repair CB W) very good; 2-pc heather wool flannel ladies riding ensemble c/o jacket & jodhpurs, 1910s, label "Jordan Marsh Company", B 42", W 37", L 36", pant W 31", L 37", inseam 22.5", (lining worn, undone belt tacks, many seam openings armscopye lining, leg pads worn/stained, 1 broken button right leg, 3.25" repair right H, fading) good. From the Collection of A.T. Jones & Sons.



### 104: TWO WOOL SIDE SADDLE RIDING HABITS, 1910-1920s

USD 400 - 600

2-pc dark grey side saddle riding ensemble, B 48", W 40.5", L 35", skirt W 29", L 38.5", (top jacket half unlined, few tiny snacks, buttons on left sleeve broken, 1.75" repair to CF, W band worn) very good; 2-pc black side saddle ensemble w/ tan lining, B 41", W 28.5", L 27", skirt W 26", L 26"-29", (0.25"-1.25" repairs CF, minor cuff fraying, 0.5" white stain right cuff, tiny-0.25" snacks, tiny-0.5" holes seat lining, taken in at jacket W, 2 small repairs skirt & 1.5" repair seat, wear/dyscoloration to facing) good. From the Collection of A.T. Jones & Sons.



### 105: TWO PUCCI VELVETEEN JACKETS, ITALY, 1961-1965

USD 500 - 800

Both w/ notched collar, CF self-covered buttons, long sleeve w/ fitted single button cuff & w/ label "Emilio Pucci Florence Italy, 100% Pure Cotton": 1 in shades of cream, black, pink & orange, c. 1965, B 41", L 25.5", SH-SH 20", (1 button fabric covering missing left cuff, tears to both cuffs, discoloration, tiny-0.5" spot stains) very good; 1 in shades of black, green, pink, blue & white w/ scalloped hem, c. 1961, B 38", L 26.5", SH-SH 19", (tiny-0.25" spot stains, 0.75" stain left cuff, button wear, label discoloration) very good. Museum at FIT.



### 106: PUCCI THREE PIECE SEASIDE ENSEMBLE, ITALY, c. 1960

USD 600 - 800

3-pc printed cotton ensemble w/ floating pink & red roses on blue wave ground c/o bandeau halter top, flared short w/ SS closure & long sleeve shirt w/ broad notched collar, CF button closures & fitted cuff w/ single button closure, c. 1960, label "Emilio Pucci Florence Italy, 100% Pure Cotton", shirt B 38", L 22.5", bikini top B up to 39", Wd 1"-7", under B up to 30", shorts W 26", L 12.75", inseam 2.5", (discoloration, label fraying, B bones removed, tiny wear holes to lining, 2.5" partial seam opening left H zipper, paint chipping on zip) all very good-excellent. Museum at FIT.



### 107: TWO EARLY PUCCI PLAYSUITS, ITALY, MID 1950s-EARLY 1960s

USD 800 - 1,200

Both w/ CF button closures, apron front pockets & integrated shorts: 1 aqua long sleeved w/ round neckline, label "Emilio Pucci Florence Italy, 100% Pure Cotton", B 38", H 38", L 30", (light discoloration, 0.75" stain right B, light stains seat, tiny pulls) excellent; 1 orange sleeveless w/ square neckline, label "Emilio S.R.L. Capri Florence, 100% Pure Wool", B 38", H 39", L 26.5", (discoloration at seams, few tiny pulls) excellent. Museum at FIT.



### 108: TWO BONNIE CASHIN DYED SHEEPSKIN COATS, AMERICA, 1960s

USD 300 - 500

Both w/ label "A Bonnie Cashin Design Sills & Co. Made in USA": 1 mustard coat w/ knitted wool lining, 1961, B 50", L 32", (CF strap very worn, light wear/dyscoloration to fur, minor cracking/shedding of fur at SHs w/ 1.5" seam opening, few scattered mats) good; 1 orange coat, B 40", L 23", (fur shedding/detaching from leather, wear, tiny scattered mats, metal scratched) poor; 1 set of pattern pieces. Ohio State Historic Costumes & Textiles Collection.



## Decades of Decadence



### 109: GALANOS ENSEMBLE & COAT DRESS, AMERICA, 1960-1970s

USD 400 - 600

2-pc ensemble in cream silk twill w/ woven yellow stripes over printed w/ black lattice motif c/o shirt w/ swallow tail collar, CF button closure & tabbed patch pockets at Hs, matching knife pleated knee length skirt, label "Galanos", B 38", W 34.5", L 24.5", skirt W 27", L 26.5", (scattered spot stains, 4" seam opening right H pocket & 3.5" & 4" to left, 1" & 0.75" stains right SH blade, 4" falling hem skirt SS); 1 cream coat dress in silk blend w/ cream stripe over printed in yellow & black spot motif w/ broad notched collar, faux B pockets w/ decorative button tab, CF buttons closures & attached knife pleated skirt, lined in silk chiffon, label "Galanos", B 42", W 36", L 42.5", (tiny spot stains, 0.75" & 1.5" stains CF B, few pulls) all very good. OS.



### 110: BOB MACKIE EVENING DRESS, AMERICA, 1980s

USD 500 - 800

Black satin back crepe evening dress w/ wide bateau neckline edged w/ beaded & sequined black chiffon Van Dykes trimmed w/ faceted bugle & ball beads in gold, bronze, black & silver, structured bodice, glove length sleeves w/ zip black, floorlength skirt knife pleated at CF W & gathered at CB, zip closure, black silk lining, label "Bob Mackie Boutique", B 39", W 31.5", L 60.5", (minor bead/sequin loss) excellent. Ohio State Historic Costumes & Textiles Collection.



### 111: TWO SILK EVENING GOWNS, AMERICA, 1980s

USD 300 - 500

Both labeled "Arnold Scaasi?": 1 black gown w/ woven brush velour polka dots on black silk satin ground, white florals, B 35", W 24.5", L 60", (1 detached floral, hem dirty/lightly worn, minor fraying to polka dots, 1.25" tear at zip) very good; 1 pink, yellow, blue & green floral chine on patterned silk ground, B 32.5", W 27", L 64", (10.5" CB seam opening, fraying to seam allowances, 5.5" & 1.5" seam openings right SH strap, hem messily altered, florals fraying) good.



### 112: HALSTON ASTRAKHAN FUR COAT, AMERICA, 1970s

USD 500 - 800

Black astrakhan coat w/ shirt collar, CF black composition button closures & turn back cuffs, label "Halston", B 40", L 44", SH-SH 19", (minor wear to fur at cuffs) excellent.



### 113: WESTWOOD/MCLAREN PIRATE COLLECTION TROUSERS, ENGLAND, A/W 1981-82

USD 3,000 - 5,000

Grey/green striped cotton trousers w/ drop front W, horizontal H pockets, white cotton broderie anglaise cuffs, label "Worlds End McLaren Westwood, Born in England", W 27", L 35", inseam 23.5", (fraying to CF W buttonholes, few tiny pulls) excellent.



### 114: YSL RIVE GAUCHE DRESS & COAT, PARIS, 1980s

USD 600 - 800

Both w/ label "Saint Laurent Rive Gauche, Made in France Paris": 1 black silk crepe belted dress, faceted glass buttons, lined in china silk, leather backed wide black satin belt w/ matching buttons, B 36", W 25", L 44", (belt stiff & creased, pulls at cuff buttons/holes) dress excellent, belt fair; 1 black wool gabardine coat w/ velvet collar & tabbed pockets, B 40", W 36", L 38", SH-SH 18", (few scratches to button) excellent. Ohio State Historic Costumes & Textiles Collection.



### 115: MAINBOCHER CASHMERE COAT, AMERICA, 1960s

USD 600 - 800

Black diamond quilted cashmere coat w/ gold tone buttons, diagonal slash H pockets, lined in twill satin, label "Mainbocher Inc. New York", B 46", L 40", SH-SH 20", (button plating worn, 11" & 3" seam openings hem lining) excellent.

## Decades of Decadence



**116: CEIL CHAPMAN EVENING GOWN, AMERICA, c. 1954**

USD 800 - 1,200

Strapless pink tulle evening gown w/ horizontally ruched fitted bodice, shaped peplum w/ self ruffle & fall w/ silk flowers in shades of peach, full floor length skirt, left SS zip closure, Rayon acetate lining, label "Ceil Chapman", B 32", W 26.5", L 55", (many tiny-0.5" spot stains/age spots, 2 detached & included florals, florals fraying, hem dirty) very good.

---



**117: STAGE WORN BEAU BRUMMELL LOUNGING ENSEMBLE, PARIS, 1931**

USD 800 - 1,200

2-pc gents stage worn lounging ensemble c/o smoking jacket in silk velvet w/ Indian block printed cotton cutout appliqué design edged w/ soutache, lined w/ cotton sateen, functional diagonal patch pockets & matching Turkish style full trousers, worn by Robert Pizan in Reynaldo Hahn's 1931 operetta "Brummell", premiered at the Théâtre des Folies-Wagram in Paris in 1931, label "Gaston Zanel", CH 45.5", W 37", L 47.5", SH-SH 20", pant W 47.74", L 41.5", inseam 29.5", (label mostly removed, 4.5" clumped/stiff velvet pile CF, pile worn at SHs, 2 belt buckles torn, 2.75" seam opening right armhole, few holes SHs, 13" repair CB seam, pant elastic shot, light wear) jacket good, trousers excellent. From the Collection of A.T. Jones & Sons.

---



**118: BARBARA MATERA FIVE PIECE COSTUME, NEW YORK, 1990s**

USD 500 - 800

5-pc c/o black, silver & grey metallic ribbon stripe 1 arm blazer w/ 1 oversized silver lapel & matching pencil skirt w/ thigh slit, fitted bolero w/ stiffened SH extensions & leotard of silver metallic lace w/ vertical rhinestone bar pin over gathers at B, paisley printed velveteen hat w/ sequined shaped brim trimmed w/ silver sequined galloon w/ feather plume, 1980s, label "Barbara Matera Ltd. Miss White New York", jacket B 45", W 27.5", L 25", SH-SH 21.5", skirt W 26", L 22.5", SH pad vest B 36", L 12.5", unstretched leotard B 42", W 24", L 19", hat Ht 10", Wd 10.5", L 10", inner circ. 23.5", (minor seam strain, scattered pulls, scratched sequins, SH pads bent, zip tarnished, hat unlabeled, feathers damaged) very good-excellent. A.T. Jones & Sons.

---



**119: BARBARA MATERA FIVE PIECE COSTUME, NEW YORK, 1990s**

USD 500 - 800

5-pc c/o black & copper metallic ribbon stripe 1 arm blazer w/ 1 oversized copper lapel & matching pencil skirt w/ thigh slit, fitted bolero w/ stiffened SH extensions & leotard of copper metallic lace w/ vertical faux topaz bar pin over gathers at B, Queen Mary hat wrapped in copper & black grid w/ sequined fringed fabric panache w/ black composite flower & sprays, 1980s, label "Barbara Matera Ltd. Miss Lerner New York", jacket B 46", W 33", L 25", SH-SH 22", skirt W 32", L 22.5", unstretched leotard B 44", W 26", L 28", SH pad harness B laid flat, 37", L 11", hat label "Woody Shelp Miss Lerner", Ht 9", Wd 9.25", L 8", inner circ. 20.5", size 6.5, (jacket lining discolored, pulls, few sequin loss, brooch scratched) good-excellent. A.T. Jones & Sons.

---



**120: BARBARA MATERA FIVE PIECE COSTUME, NEW YORK, 1990s**

USD 500 - 800

5-pc c/o green, black & gold metallic ribbon stripe 1 arm blazer w/ 1 oversized gold lame lapel & matching pencil skirt w/ thigh slit, fitted bolero w/ stiffened SH extensions & leotard of gold metallic lace w/ vertical rhinestone bar pin over gathers at B, metallic faux shagreen fascinator w/ gold lame undulating spire w/ real & black composite feathers, 1980s, label "Barbara Matera LTD Miss Haywood New York", jacket B 46", W 33", L 24.5", SH-SH 22", skirt W 31", L 23", leotard unstretched B 44", W 25", L 28", SH pad harness laying flat 34", L 13", hat label "Woody Shelp Miss Hollywood", (missing 2 buttons 1 cuff, tiny pulls to all, tiny stain CF skirt hem, sequins scratched, feathers damaged, few broken brides) good-excellent. A.T. Jones & Sons.

---



**121: BARBARA MATERA DANCE COSTUME, NEW YORK, LATE 20TH C**

USD 300 - 500

One piece harem style dance costume in synthetic organza embroidered w/ gold bangle drops, barrel & bugle beads, various passementerie embellishments & faceted stones, halter neck w/ illusion midriff, double tiered overskirt w/ open front revealing integrated shorts, label "Barbara Matera Ltd. Di Lascio, New York" & "The Washington Opera John F. Kennedy Center for the Performing Arts, Washington DC, Fuller Haworth", B 34", W 29", L 53", inseam 5.5", (bead loss, worn/damaged beads, fraying to trim, discoloration, 0.75" hole right W mesh, 4.5" tear inseam, 1.5" & 3" repairs overskirt hem, neck lining stained, CB closures altered) fair-good.

---

## Decades of Decadence



### 122: TWO THEATRICAL INDIGENOUS SIBERIAN ENSEMBLES, MID 20TH C

USD 300 - 600

Both w/ applied fleece, wool flannel & twill appliqués in pink & blue, decorative cording applied w/ Corelli machine, lined in rayon twill, theatrical costumes of indigenous Siberian peoples possibly referencing the Nganasan: 1 cotton broadcloth jckt w/arrowhead shield at CH, B 46.5", W 29.5", L 30", (slvs shortened, light wear, few snacks) & matching trousers, W 32", L 42.5", inseam 29", (6" inseam opening, repairs left cuff & seat, no left W closure); 1 leather jckt w/ trapezoid at chest, slvs of twill wool, B 42.5", W 30", L 29", (very worn, tiny-0.5" holes, missing trim H, stains in fur, pulls) matching trousers, W 27.5", L 39", inseam 27", (trim detaching, taken in, repair lap trim)(all w/ discoloration/spot stains) both good. A.T. Jones & Sons.



### 123: WOOL FELT SZUR COAT, HUNGARY, LATE 19TH C

USD 800 - 1,200

Cream wool felt Szur coat (Shepherd's coat) w/ soutache machine stitch cording & wool appliqués, lined in plaid barege, Hungary, 19th C, CH 60", L 51", SH-SH 23", (heavy wear/staining/discoloration, neck ties shredded, lining very worn, several 0.5"-1.5" holes in SHs & sleeves, 6" patched tear left armscye, 4" right armscye & 3" left sleeve) fair. From the Collection of A.T. Jones & Sons.



### 124: TOREADOR VEST & JACKET, 19TH C

USD 800 - 1,200

Traditional traje de luces or suit of lights embroidered w/ silver cord, flat hammered sequins w/ bullion, shaped sequins, red paste stones & silver wrapped balls arranged in established patterns all on maroon silk satin ground, entirely hand stitched, most likely Spanish, cotton back vest w/ metal eyelets for lacing over back W, jacket CH 30", L 18", vest CH 33", W 30", L 18", (heavy wear, tarnish, significant shattering & sequin & bauble loss to both, right SH pauldron largely detached, fading, 2.25" hole left vest SH, lame braid detaching) both fair-poor. Louisiana State Museum.



### 125: TWO REGIONAL VESTS, BOLIVIA, LATE 19TH-EARLY 20TH C

USD 300 - 500

1 blue wool w/ machine applied soutache & pearlized painted shoe buttons, lined in fustian, CH 40", W 37.5", L 19.5", (tiny-0.75" snacks/holes, lining stained/worn, partially repaired sm holes right H, 1" light stain b/t baubles left front, light discoloration SH & collar) good; 1 green silk panne velvet, corded & quilted, brass ball buttons, lined in warp patterned cotton, South American most likely Bolivian, CH 38.5", W 35.5", L 22.5", (velvet worn, fabric worn through at neckline & armscyces, trim worn, 0.75" repairs left armscye & top buttonhole, lining worn, underarm stains, lame tarnish) fair. From the Collection of A.T. Jones & Sons.



### 126: TWO HEAVILY EMBROIDERED LADIES VEST, BALKANS, EARLY-MID 19TH C

USD 800 - 1,200

Both w/ metallic braid & cord couched work in serpentine, band & classical bud motifs, oversized metallic thread covered decorative cones at neckline w/ coral beads, hook & eye closures: 1 w/ exposed maroon velvet ground at CB, 19th C, CH 33", L 10.5", (tarnish/wear/oxidization to lame, bead loss, 1 missing eye closure, wear to velvet pile at closure, shattering to CB velvet, closures rusted) good; 1 entirely covered w/ metallic cord & braid, 19th C, CH 33", L 10", (tarnish/wear to lame, lining discolored, minor fraying right SH, cord detaching right SH & left SS, closures rusted) very good.



### 127: TWO TOURIST TRADE EMBROIDERED LADIES GARMENTS, CZECHOSLOVAKIA, c. 1930

USD 400 - 600

1 sheer cotton dress w/ blue & red smocking to neckline, W & cuffs, floral embroidery to front opening, upper arms & around skirt above knees, made for tourist market & purchased between 1929-1930, label "Made in Czechoslovakia", B 60", W 32", L 44", (inking CB collar, stains above hem, hem let down, 0.5" seam opening left SS hem); 1 woman's cotton blouse w/ hand done broderie anglaise type embroidery in yellow & orange silk w/ mm chainstitch embroidery, purchased 1929-1930, Czech, B 58.5", L 22.5", SH-SH18", (tiny spot stains, 2 ruffles detached/incl, 0.75" hole left SS, wear/frayed underarms, inking collar lining); t/w pillow covering purchased 1952, Romania, 18"x14", (wear to embroidery at edges, light spot stains, inking 1 corner) all good-very good.

## Decades of Decadence



### 128: REGIONAL TOREADOR STYLE JACKET, LATE 19TH-EARLY 20TH C

USD 500 - 800

Red velvet w/ wool applique Matador bolero, Spain, 19th C, CH 40", L 17", SH-SH 40", (velvet pile worn at underarms, 4.5" repair CB lining & 4" left underarm, scattered tiny-0.5" holes in felt, 1.25" hole left underarm, fraying to trim, taken in at sleeves) fair-good. From the Collection of A.T. Jones & Sons.



### 129: TWO CREAM WOOL BURNOOSE, MOROCCO OR TUNISIA, c. 1937

USD 300 - 500

Both fulled wool w/ twined braid & appliqué embroidered top seam on ?hood? & knotted netting inserted godet between openings, 1 SH-SH 20", L 55", (significant wear/pilling, scattered tiny spot stains, 6" & 2" light stains right B, cluster of thin stains right of restigal hood) good; 1 SH-SH 20", L 54", (light wear/pilling, light discoloration/spot stains) very good. From the Estate of Doris Duke, Newport Restoration Foundation.



### 130: THREE HEAVILY EMBELLISHED WEDDING VESTS, TUNISIA, EARLY-MID 20TH C

USD 400 - 600

Three wedding vests embroidered in gold bullion, multicolored flat metallic strips & or nue w/ red thread, silver stamped sequins & silver wrapped cording, elaborate motifs w/ fish, stylized palm & peacock motifs for fertility, heavily embroidered & tasseled standing SH caps: 1 purple silk twill, CH 34", L 14.5", (fabric worn at SS's & SH edges, fading purple); 1 green silk twill, CH 39", L 15", (insertions at SS's, SS's shattering, heavy fraying to tassels, pulling/wear to embroidered lame, CF closure torn & repaired, discoloration CB); 1 cerise silk twill, CH 34", L 15", (only 1 CF closure bead, shattering/wear spots throughout fabric, minor sequin loss), (all w/ minor tarnish/wear to lame & sequins) all good.



### 131: TWO EMBROIDERED KIMONO STYLE ROBES, JAPAN, 1930s

USD 300 - 500

1 black silk w/ padded silk embroidery in cherry blossom motif, china silk lining, label "Made in Japan", CH 52", L 52", (3.5" seam opening left sleeve, 6.25" opening right sleeve & 4" opening at right armhole, scattered tiny-0.25" holes, few small stains left B & sleeve); 1 fine silk pongee w/ padded silk embroidery in cherry & fantasy floral motifs, CH 56", L 50", (1" stain right CH & 0.5" right lapel, 0.75" seam opening left armhole, few pulls throughout, light staining SH blades) both very good.



### 132: ASSUIT SHAWL, EGYPT, EARLY 20TH C

USD 400 - 600

White cotton ground w/ silver metallic in typical geometric & spot motifs, 22" x 84", (large bands of tarnish to long sides, minor pulling/fraying to edges) excellent.



### 133: JACQUARD WOVEN PAISLEY SHAWL, 1860s

USD 500 - 800

Jacquard woven wool & cotton paisley w/ black silk center, French or Norwich, 58.5" x 125", (wear spots in black areas, fringe wear/loss, few tiny tears in green edging) very good.

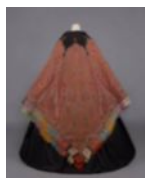


### 134: JACQUARD WOVEN PAISLEY SHAWL, 1860s

USD 500 - 800

Wool & silk four sided Jacquard woven paisley border on wool red ground, 66.5" x 137", (worn at edges & fringe, tiny-0.75" holes 1 corner, scattered wear spots/holes/spot stains, 2.5" line stain near center) good.

## Decades of Decadence



**135: WOVEN & EMBROIDERED SHAWL, KASHMIR, 1850s**

USD 800 - 1,200

Square Kashmir woven shawl w/ single row of embroidered paired gates, integrated black eight pointed center, 74" x 76", (wear & fringe loss to border, seam openings at some edges) excellent.

---

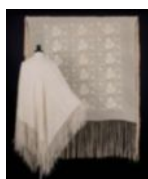


**136: TWO CANTON EMBROIDERED SHAWLS, 1930s**

USD 300 - 500

1 black silk canton mm embroidered shawl w/ border enclosed floral & avian motif, 48" x 52.5" w/ 19" fringe, (minor shattering at edges, few tiny pulls) good; 1 cream silk w/ mm Moderne embroidery in triangular wedges & spheres, 50" x 47.5" w/ 19" fringe, (fringe ends fraying, 0.5" pink stain near center, few tiny pulls, few tiny spot stains) very good.

---



**137: TWO CREAM CANTON SHAWLS, EARLY 20TH C**

USD 300 - 500

1 dark cream silk reversible mm embroidered w/ symmetrical rows of row motifs, 50" x 50" w/ 17" fringe, (many tiny-0.5" spot stains, 1 tiny hole inside stain near 1 edge, messy fringe w/ ends fraying); 1 light cream w/ knotted fringe & handembroidered surround separated & edged w/ woven satin border, 58" x 63" w/ 11" fringe, (fringe messy, 0.25"-0.75" repairs near center, cluster of stains to 2 edges, tiny scattered spot stains) both good.

---



**138: CHANTILLY OR MANTILLA LACE SHAWLS, 1850-1860s**

USD 400 - 600

1 square mantilla lace shawl, 1860s, 27.5" x 99", (few 0.5"-2" tears at edges, few pulls) good; 1 wool Chantilly lace shawl, 1850s, 102" x 54", (scattered 0.5"-1.5" holes at edges, tiny pulls) good; t/w 1 black mantilla, (holes) Ohio State Historic Costumes & Textiles Collection.

---



**139: TWO SILK CHANTILLY LACE SHAWLS, 1850-1860s**

USD 300 - 500

1 silk Chantilly lace shawl w/ dense curling frond & fern motif, 24" x 101", (fraying ends, many pulls, few small holes, tiny-1" seam openings at edging); 1 silk Chantilly lace shawl w/ aster or foliate motifs, 1870s, 23.5" x 98", (0.75" hole 1 end, few small holes, two 0.5" repairs) both good.

---

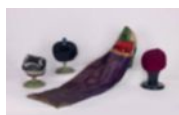


**140: GENEROUS LOT HAND & MACHINE MADE LACE, 1840-1870s**

USD 300 - 500

Wd range 3"-21.5", L range 14.75"-330": 8 chantilly pieces: 1 w/ leaf sprigs, 1 w/ pointed edge, 1 hand run lace w/ florals, 1 large net lace w/ 1 scalloped edge, 3-pc w/ oval floral design, 1 net lace w/ scalloped floral design, 1 small mm bobbin w/ medallion design, 1 small net w/ 1 scalloped edge, 1 floral in zig-zag shape, 1 w/ floral garland, 1 large wide flounce w/ scalloped edge, 1 shawl/wrap, 1 w/ leaf edge design, 1 black bobbin w/ abstract design; 1 Mantilla w/ largelarge floral scallop edge, 1 tulle mm lace net w/ scalloped edge, (all w/ raw/fraying ends & edges, scattered holes, some w/ tears & repairs & broken brides) all good-excellent.

---



**141: FOUR REGIONAL HEADPIECES, 19TH-20TH C**

USD 300 - 500

1 man's black silk satin hat w/ glass finial, 19th C, China, Ht 6", circ. 22", size 7, (metal tarnish, lining discolored, crown slightly misshapen, few scratches to glass spheres); 1 knitted & felted wool chechia dyed, cochineal dyed, w/ original packaging, Tunisia, Ht 3.5", circ. 20.75", size 6 5/8, (packaging worn, few tiny snacks, slightly misshapen); 1 Uzbek man's cap w/ white embroidery, Ht 4", circ. 20.75", size 6 5/8, (misshapen & very stiff); 1 metallic embroidered women's bridal headdress w/ hanging panel, refashioned from early 19th C cap & early 20th C hanging panel, Tunisia, Wd 7", depth 5", L 39", (broad tarnish, discoloration to purple panel, spot stains/discoloration to green lining) all good-excellent.

---



## Decades of Decadence



**142: DRAWSTRING BAG OF REPURPOSED 18TH C EMBROIDERY & SILK**

USD 300 - 500

Drawstring bag made composed of patterned silk ribbon w/ silk embroidered cotton panel repurposed from 18th C Turkish bath wrapper (bohce), fine feather stitching, yellow watered silk lining possibly Aleppo silk 18th C?, 10.75" x 15.5", (tearing & loss to red crochet fabric at bottom, tassel/drawstring ends worn, several 1.25"-7" seam openings top edge, embroidery loss, few tiny spot stains) good.

---



**143: TAMBOUR EMBROIDERED PRAYER WALL HANGING, PERSIA, EARLY 20TH C**

USD 500 - 800

Silk tambour embroidered wool twill panel, embroidered w/ "By the name of God? & Allah is the light of the sky and the earth?", Shia Muslim, 52" x 77", (ends raw, 3" stain bottom left corner, 0.5" hole top left corner, 1"x1" L shaped tear top edge) good. Ohio State Historic Costumes & Textiles Collection.

---



**144: RESHT WORK PANEL, PERSIA, 1880s**

USD 1,200 - 1,500

Pieced panel of red, blue, yellow, black & white wool broadcloth w/ silk needle chainstitch embroidery, central medallion w/ fantasy Mosque enclosed in six pointed star, embroidered script "Praise to Allah?", Resht, 64.5" x 66", (few scattered small snacks & spot stains, minor wear to embroidery, 1 tiny hole left edge, few light guide marks visible under/around embroidery) excellent.

---

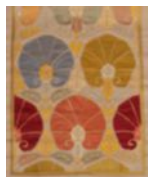


**145: LAKAI SILK EMBROIDERED AYNA KHALTA, UZBEKISTAN, 19TH C**

USD 2,000 - 3,000

Needle chainstitch embroidered Ayna Khalta or Aynalik meaning "thing/cover for a mirror" w/ silk florals on brown wool ground, tablet woven fringe, 19th C, Uzbekistan Lakai people, 20.5" x 19.5" w/ 2.25" fringe, (broad fading, 2" of fringe missing, many tiny-0.75" holes, 1.75" hole 1 edge, minor wear/embroidery loss, 4.5", 2.5", 3" & 4" repairs at center, wear to fringe) fair.

---



**146: OTTOMAN INSPIRED HAND EMBROIDERED HANGING, LATE 19TH-EARLY 20TH C**

USD 1,200 - 1,800

Couched silk panel in multi-colored classic Ottoman carnation palmette motif w/ stylized leaves & stylized tulip interstices on heavy linen ground, entirely hand embroidered, partially unfinished, possibly Ottoman but more likely Western European, British or American Arts & Crafts Movement inspired by Ottoman influence, 29.5" x 123", (some guidelines for embroidery visible, ends raw) excellent.

---

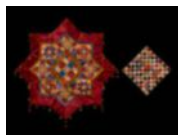


**147: EXCEPTIONAL HAND EMBROIDERED PANEL, c. 1850**

USD 2,000 - 3,000

Black wool broadcloth table cover embroidered w/ ombre silk floss in graduated wreath of wild rose, fuchsia, pansy motifs separated with feather stitch rings, branching floral corner motifs 2 w/ bees, embroidered compound scallop edge, most likely American, 54" x 54.5", (very light wear at center fold line) excellent.

---



**148: TWO UNUSUAL DECORATIVE INTERIOR TEXTILES, LATE 19TH C**

USD 300 - 500

1 Turkish smoking room inspired silk velvet table cover composed of blocks referential to typical star quilt motifs arranged in a typical octagonal star w/ featherstitching & cording, graduated silk & metallic thread drops to edge, 1870-1880s, likely America, 55" x 56", (wear/crushing to velvet, fabric loss on many baubles at corners, few missing baubles, tarnish to lame, minor embroidery loss) very good; 1 silk, velvet & brocade checkerboard cushion top composed of circular pieces gathered into squares, printed cotton backing, 19.5" x 19.5", (heavy wear to velvet/plush squares, significant shattering to many squares, discoloration to backing edges) fair.

---

## Decades of Decadence



**149: LARGE RENAISSANCE REVIVAL WALL HANGING, EARLY 20TH C**

USD 300 - 500

Lisere' weft lame brocade panel w/ symmetrical floral & architectural motifs in soft shades of red, blue & green on tan silk ground, undulating galloon border in metallic & cream, half silk backing, likely Italian for Persian Market, 77" x 82", (tarnish to lame at center, broad fading/dyscoloration, 18" stain w/ several holes near center, many 1"-3" seam openings at edges) good. Ohio State Historic Costumes & Textiles Collection.

---



**150: RESIST DYED, PAINTED & EMBROIDERED PATTERNED SILK PANELS, JAPAN, 19TH C**

USD 500 - 800

Both resist dyed, painted, drawn & embroidered w/ rose gold wrapped thread on Chinese patterned silk ground: 1 panel, 17.5" x 33.25", (shattering backing edges, scattered tiny-0.25" holes, light wear); 1 panel, 33.25" x 59", (shattering backing edges, seam opening back panel, 2" tear bottom edge seam, tiny-1" holes throughout, minor stains/dyscoloration, 3" repair in lame bottom right) both fair-good. Louisiana State Museum.

---



**151: QUILTED & EMBROIDERED BED COVERING, NEW ENGLAND, MID 18TH C**

USD 500 - 800

Brown cotton coverlet w/ overall diagonal checkerboard quilting & embroidered spot floral & chili motif, cross stitch embroidered initials at back ?M. F.? & w/ printed tape applied to back ?Walnut Room- 20, Embroidered Bedspread-brown-November-December?, ?Season 4? likely used in historic house setting, 92" x 87.5", (broad stains/dyscoloration, smelly, many tiny-lg period repairs, wear to embroidery, wear/shattering to fabric, 8" patch bottom left corner, 19" patch at center) fair. Ohio State Historic Costumes & Textiles Collection.

---



**152: GLAZED CHINTZ CURTAIN & TIEBACK, 1765-1775**

USD 400 - 600

Glazed chintz curtain panel w/ peacock & rose motifs, backed w/ linen, matching shaped tieback, 46.5" x 105.5", (many small-3" shatters, fading/dyscoloration to 1 side, pleated gathers undone top edge, 1.25" partial period repair near center bottom, 5.5" x 3.5" seam opening b/t panel & backing top left corner) fair-good. Ohio State Historic Costumes & Textiles Collection.

---



**153: PRINTED COTTON SUMMER BEDCOVER, 1840-1850s**

USD 400 - 600

Block printed cotton in floral garlands w/ roses & wallflowers, unbacked, finished w/ cotton tape, 84.75" x 98", (broad light dyscoloration & spot staining, scattered small-4.5" darker stains) very good. Ohio State Historic Costumes & Textiles Collection.

---

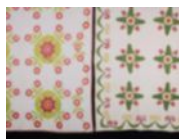


**154: PATTERNED SILK CARRIAGE ROBE, 1850s**

USD 500 - 800

Twill silk gold, tan & brown acanthus foliate & exotic florals on sapphire blue satin ground, lightly stuffed & quilted w/ blue cotton backing, 1850s, 43" x 116.5", (binding basted on, minor fraying/pulls to edges, remnants of unpicked stitches 1 edge, 2" & 21" seam openings b/t panel & backing at top edge, top corners fraying) very good. Ohio State Historic Costumes & Textiles Collection.

---



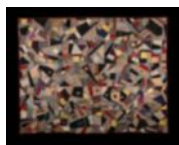
**155: TWO APPLIQUÉ COTTON QUILTS, 1850s**

USD 400 - 600

Both densely hand quilted & w/ printed & plain green, yellow & red appliqué: 1 w/ serpentine flower chain border & symmetrical floral medallion w/ eight lobed florals & chartreuse foliate, 96" x 96", (few tiny-0.25" spot stains, red border fabric very worn/shredded, light fading/dyscoloration); 1 w/ dark forest green scalloped border w/ acanthus leaf motifs sprouting from apices & in alternating colors & center w/ grid of kaleidoscopic motifs, 75.5" x 95", (dark pink fabric very worn, 7" stain inside 1 floral, scattered light stains, minor fading) both fair-good. Ohio State Historic Costumes & Textiles Collection.

---

## Decades of Decadence



**156: BLOCK BASED CRAZY QUILT, 1880s**

USD 1,200 - 1,500

Crazy quilt composed of various silk dress fabrics including velvets, brocades, appliqués & ribbons arranged in squares & rectangles w/ wide variety of feather stitching, embroidered vignette & initials ?H.M.?, (heavy shattering to some pieces, few blocks mostly missing from shattering) good. Ohio State Historic Costumes & Textiles Collection.

---



**157: SILK & VELVET NORTHUMBERLAND STAR BEDCOVER, 1880s**

USD 800 - 1,200

Variation on Northumberland star in patterned & plain weave silks, silk satins, plush & velvets, maroon silk faille ribbon ruffle, printed cotton backing, likely American, 66" x 66", (light wear to heavy pile velvet, tiny spot stains, minor dye bleed from black to brown, tearing/holes to backing) very good.

---



**158: LONE STAR QUILT, AMERICA, c. 1800**

USD 1,500 - 2,000

1 feathered Lone Star quilt of printed glazed & unglazed cotton, cotton border w/ overlapping vase bouquet motif, 105" x 108.5", (staining/few holes & shatters to backing, many tears to edges & brown squares, wear to binding, few tiny holes) fair; t/w 1 unfinished quilt topper of printed & glazed & plain cotton, c. 1830, 85" x 86", (scattered tiny-0.5" spot stains, minor fraying/pulling to edges, seam openings at all corners) Ohio State Historic Costumes & Textiles Collection.

---



**159: CREAM PATTERNED SILK EVENING DRESS, 1840s**

USD 500 - 800

Evening dress composed of cream patterned silk panels w/ floral & spot motif & elaborate border in undulating designs, fitted bodice w/ deep V waistline at CF & CB closures, piped neckline, short sleeves, armhole & W, lightly boned bodice, cartridge pleated skirt, lined in cotton, entirely hand sewn, B 32", W 21.5", L 55", (shattering to cuffs, neckline, W, hem & CB, many light spot stains, stains/discoloration, 2.5" seam opening CB W, missing CB closures, bones poking from casings, lining stained) good.

---



**160: ROLLER PRINTED SUMMER DAY DRESS & PELERINE, c. 1855**

USD 400 - 600

Cream cotton mull dress roller printed in stacked shadow diamond motif, wide bateau neckline w/ standing ruffle, short sleeve cap w/ double row of ruffled puffs w/ ruffle & detachable wide flared bell sleeves w/ double ruffle gathered over cord, bodice gathered into fitted W over cotton under-bodice, piped W & armhole, full cartridge pleated skirt w/ cotton twill tape hem saver, matching pelerine w/ same double corded ruffle, B 35", W 23", L 50.5"-54", shawl L 15.5", (fading, minor shattering to diamonds & tiny-0.5" spot stains to both, tide marks hem, two 2" stains at seat, 0.75" repairs CB opening base, missing bones, 1" repair CB W) good-very good. Ohio State Historic Costumes & Textiles Collection.

---



**161: WOOL DAY DRESS & WRAPPER, EARLY 1850**

USD 500 - 800

1 block printed wool day dress w/ woven fringe to wrapped pagoda sleeve w/ inserted brown & cream cord, piped neck opening, armhole & W, full knife pleated skirt, CF hook & eye closures, B 36", W 25", L 52.5"-57", (hem saver very worn, many 0.25"-3" patches of warp loss, tiny-0.5" stains CF B, light tiny-2" stains lap) fair; 1 resist dyed & printed wool wrapper w/ forest green silk passementerie trim to pagoda over sleeve, fitted under sleeve, gutta percha CF buttons, piped neck opening & armhole, wool hem saver, printed cotton lining w/ boteh motif, B 35", W 27", L 51"-61.5", (1"-9.25" period repairs throughout, 1 missing CF button, 2" tear back left W, neckline cording worn, 3" tear CF) good. Ohio State.

---

## Decades of Decadence



**162: CREAM PATTERNED SILK GOWN, c. 1850**

USD 400 - 600

Originally 2-pc cream weft patterned silk w/ patterned satin stripe, fitted bodice w/ short sleeves, piped bateau neckline, armhole & W, cartridge pleated full skirt, hook & eye CB closures, entirely hand stitched, most likely wedding, B 35.5", W 24", L 51", (skirt & bodice joined, underarm stains/wear, stains CF B, tiny-0.25" stains throughout, tiny pulls, significant stains to seat and right side, 3" seam opening right W, missing SS bones) very good. Ohio State Historic Costumes & Textiles Collection.



**163: WINTER DAY DRESS WITH ALTERNATE BODICE, LATE 1860s**

USD 400 - 600

3-pc of silk & wool blend woven w/ warp Ikat, silk taffeta ruched ribbon & corded fringe, extended visiting bodice w/ CF closure w/ decorative domed buttons overlaid w/ net & mm embroidered net jabot, 2-pc military sleeve w/ piped armhole, fitted princess line W & shaped tabbed peplum, day bodice w/ CF crochet button closures, 2-pc military slv applied ribbon & fringe at cuff & SH, piped neckline, armhole & W, gored skirt w/ applied trim for illusion overskirt, visiting bodice B 36.5", W 24.75", L 31-36", short bodice B 36", W 23", L 15.5", skirt W 23", L 43.5", (wear to bodices, shattering trim, long bodice lace tattered & reinforced w/ net, 1 missing button, both taken in, SH lining damaged short bodice, lg stain skirt hem, sm stains) good. Ohio State



**164: SILK OTTOMAN EVENING GOWN, c. 1868**

USD 800 - 1,200

2-pc cream silk ottoman gown c/o fitted bodice w/ V-neckline trimmed w/ embroidered net lace, full sleeve w/ extended flared ruffle at elbow, extending V W front & back, trained gored skirt w/ knife & inverted box pleated skirt, B 37", W 24.5", L 15"-23.5", skirt W 25", L 42"-68", (trim discolored/tearing at collar & cuffs, lining discolored, tiny-0.25" spot stains, light stains to hem & right H) very good-excellent. Ohio State Historic Costumes & Textiles Collection.



**165: WOOL & SILK VELVET DAY DRESS, 1880s**

USD 400 - 600

2-pc tailored day dress in brown patterned novelty weave wool w/ green silk velvet plastron & cuffs, fitted bodice w/ overlapping front collar lapels & CF embellishment w/ copper colored looped passementerie, lined w/ brown cotton twill, integrated overskirt w/ broad scalloped hemline trimmed w/ same loop passementerie over deep knife pleated flounce of glazed & resist printed cotton underskirt, B 41.5", W 33", L 20.5", skirt W 27", L 43", (velvet discolored, underarm stains, small pulls, few missing closures, small wear spots, 2" seam opening bodice hem, 0.25"-1" wear holes in skirt, 0.5" repair CF lap, back W band very worn & partially repaired) good.



**166: TWO EXTENDED BODICES & ONE MOURNING DRESS, LATE 19TH C**

USD 500 - 800

1 patterned silk extended Austrian drape bodice w/ maroon half silk satin triple back reverse & deep ruched & gathered back panel over cording, c. 1880, B 36", W 26", L 48", (fading, sm shatter spots, pulling/stains at seams, no buttons); 1 tan taffeta extended Princess line bodice w/ square tab collar in alternating silk stripes into cropped chevron at CB, asymmetrically draped back, lined in cotton twill, c. 1878, B 34.5", W 23.5", L 46"-56", (underarms stains/shattering, tiny-0.5" spot stains/shatter spots, hem w/ significant shattering, bones missing); 2-pc black silk mourning dress w/ cutwork & embroidered chemical lace on silk organza appliqués, 1890s, B 36", W 24", L 42-47", (6" binding removed neckline, skirt W altered) dress good, bodices fair



**167: TWO DAY DRESSES, c. 1880 & c. 1890**

USD 400 - 600

2-pc fine tattersall navy & tan shot silk taffeta visiting dress, fitted bodice w/ standing ruffled collar into deep gathered & smocked front panel & w/ outer ruffle across neck & continued at either side of CF to W, full slv gathered to SH & cuff, lined in cotton twill, flat front gored skirt w/ double hem ruffle, lined in glazed cotton & linen, c. 1890, B 33", W 24.5", L 19.5", skirt W 21.5", L 42", (2 detached/incl buttons, tiny-1" stains/holes, collar & cuffs shredded, stains CB hem); 2-pc khaki bombazine c/o ladies cutaway frock coat, bodice w/ integrated W coat, agate buttons, collar, cuffs & overskirt hem of dark green wool twill, c. 1880, B 33", W 27", L 20-38", skirt W 26.5", L 30", (shattering, tiny-1" stains, hem worn) both fair.

## Decades of Decadence



**168: PURPLE SILK SATIN & CISELE VELVET DINNER GOWN, c. 1895**

USD 500 - 800

2-pc dinner dress of purple silk satin & cisele velvet, bodice w/ cisele velvet faux vest w/ Renaissance slashing, leg o' mutton sleeves, CF closure w/ alternating hooks & eyes, matching slightly trained skirt w/ gathered fullness at CB, B 38.75", W 28", L 16", skirt W 27", L 40", (CF bodice modified & snaps present on left side, underarm stains, petersham worn/modified, 4" cluster of sm stains & wear spots right elbow, cuff trim worn, padded hem worn, hem ruffle worn & partially missing/detached)all good; t/w heavily ruched & pleated petticoat front.



**169: ONE DINNER & ONE EVENING GOWN, NEW YORK, EARLY 1890s & c.1905**

USD 800 - 1,200

2-pc of drouget patterned blue & black shot silk, bodice w/ green grosgrain bows & cummerbund style W band, black lace over cream lace at CF, black velvet ribbon appliqué & flat sequin embroidery, skirt w/ velvet hem facing & cotton lining, B 34.5", W 24.5", L 16", skirt W, (broken brides, hole left armscye); 2-pc of black open squared mesh, slight monobosom bodice w/ square neckline, draped mm Mantilla lace flounces crossing at CF continuing over SHs & into fitted black silk plush W band w/ falls at CB, matching trained skirt, lined in silk taffeta, label "Hillen & Oliver Broadway Arcade, N.Y. City", B 37.5", W 25.5", L 15", skirt W 24", L 41-54.5", (7" & 2" tears skirt hem, broken brides, sm holes seat, slv seam tape detaching) all good-excellent.



**170: DINNER/EVENING GOWN WITH ALTERNATE BODICE, LATE 1890s**

USD 500 - 800

3-pcs of weft patterned silk w/ vertical ombre stripe c/o evening bodice w/ heilmann embroidered silk organza overlay to CF, at neckline & cuffs, dinner bodice w/ long sleeves, stock collar & cream silk satin CF insert all w/ chemical lace & steel bead passementerie, lined in cotton twill, matching skirt w/ velvet hem saver, lined in fine cotton twill, evening bodice 40", W 28.5", L 15", day bodice B 42", W 29.5", L 17.5", skirt W 28", L 39.5", (tiny-2" holes & many spot stains in cuffs & neckline of evening bodice, light stains left H & SS, minor bead loss day bodice, underarm stains, tiny-1" spot stains, minor rust, fraying CF closures, tiny-0.5" spot stains skirt, 0.75" hole within 1" stain right side, hemsaver dirty) all good-very good.



**171: CREAM SILK SATIN WEDDING GOWN, 1900-1910**

USD 300 - 500

2-pc cream silk satin w/ gathered & ruched chiffon yoke & mm lace flounce over CF, finely tucked back panel & bodice over B into W, full fitted sleeve shaped edge revealing lace, faux cummerbund W band w/ self-panache at left front W, hidden left sidebodice closures, trained skirt w/ paired front open godets w/ lace reveal, B 32", W 23", L 18", skirt W 22", L 39"-59", (light stains/shattering at underarms, lace at cuffs & B damaged & w/ 5" x 4" section removed from left B, water marks left sleeve & front W, shattering to SHs, right elbow & at right side above hem in skirt, tide marks skirt, 0.25" holes at W band, stains to train, lace insert in skirt damaged) fair.



**172: TWO MONOBOSOM DAY DRESSES, c. 1904**

USD 400 - 600

2-pc linen w/ tape & Tenerife appliqué, standing collar, CF hook & eye closures, bishop sleeve finely gathered into fitted cuff, CF W ruched, trained skirt w/ CB opening, B 38.5", W 31.75", L 19", skirt W, L 42"-53", (staining, 1.5" undone gathers left W, 1 missing closure, CB internal W band missing, hem dirty, trim detaching right side, no W closures) very good; 2-pc handkerchief linen w/ Schiffli embroidery & finely tucked yoke & sleeve bands, CB hook & eye closures, skirt w/ tucks above broadhem flounce, B 48", W 40", L 23", skirt W 23.5", L 40", (holes/tears x W, left underarm & right cuff, light discoloration, 1.5" tear left hem & 14.5" & 5.5" repairs, 3" tear below W opening, 1" repair CB W) good. Ohio State.



**173: TWO EMBROIDERED TEA DRESSES, c. 1908**

USD 300 - 500

1 spot motif embroidered cotton w/ Heilmann clover motif & eyelet embroidered insertions, standing collar, vertically tucked yoke into pleated W, SH ruffles over full sleeve into fitted cuff, full skirt w/ braid hem flounce, CB embroidered button & hook & eye closures, B 54.5", W 27", L 55", (tiny-0.25" spot stains lower skirt, light discoloration) excellent; 1 linen w/ Heilmann fleur-de-lis motif embroidery, mm lace insertions & rows of horizontal tucks over B, at CB, sleeves & to skirt, CB hook & eye closures, B 43", W 22.5", L 54.5", (1.5" hole CB W, discoloration, 4.5" patched tear right SH, 1.75" tear seat w/ partial patch, 1" hole left underarm, small repairs right SH, tiny-0.5" holes in net, hem line altered) good. Ohio State.



## Decades of Decadence



**174: TWO PIECE SILK TAFFETA DAY DRESS, c. 1904**

USD 400 - 600

2-pc cranberry taffeta dress, handmade bobbin lace w/ inserted multicolored flat cord to standing collar, along yoke & CF, vertical tucked net yoke & long fitted sleeves, shaped cuff & collar w/ pleated net edging, black silk velvet ribbon to collar & across bodice front & at SHs, full skirt w/ let out pleats, B 39", W 23", L 18", skirt W 22", L 41"-43.5", (insertions at both sleeves to make wider, underarm stains, original backing to net shattered & mostly missing, 1" stain CF B, small holes in net, collar discoloration, many tiny spot stains skirt, inking CB W band lining, missing W closure) good



**175: TWO BLACK NET OR GAUZE DAY DRESS, c. 1905**

USD 500 - 800

2-pc of squared net c/o monobosom bodice & slightly trained skirt w/ black silk velvet ribbon to wide neckline ruffle, slvs, deep cuffs, at bodice W w/ flat bow at CB, sides of skirt & double row at hem, inserted band of corded machine lace below knee, B35.5", W 24", L 18", skirt W 23", L 41-47", (petticoat N/I, few missing closures, wear) very good; 2-pc of ribbon & gauze striped silk over cotton c/o bodice w/ gathered ruched yoke edged w/ deep self-ruffle, black silk box pleated ruffle, elbow lengthslv w/ slight puff gathered at upper arm & flared engageante cuff, gored skirt w/ box pleated silk ruffle terminating in paired ribbon rosettes, B 31.5", W 22", L 17.5", skirt W 21.5", L 41", (petticoat N/I, unlined, wear/shatter spots) good. Ohio State



**176: ONE AFTERNOON & ONE WEDDING DRESS, BROOKLYN, 1890-1903**

USD 400 - 600

2-pc black & grey striped silk taffeta w/ white & pink shot silk collar w/ black silk velvet ribbon appliqué & edging, CB closure w/ velvet ribbon panache, skirt w/ 5 bias cut tiered ruffles edged w/ black silk velvet, cotton lining, c. 1903, skirt W 25", L 43"-51", (2 detached/incl hem weights, shattering, several 1"-7" stains CF skirt, scattered spot stains, label mostly removed); 2-pc cream silk ottoman wedding gown w/ cream silk satin double face ribbon, c. 1893, label "Mrs. Arnold 169Clinton St.B?klyn", B 39", W 28", L 16", skirt W 29.5", L 40"-60", (shattering, underarm stains, bones poking from casings, spot stains to neckline ribbon, 6.5" seam opening CB, piping at skirt W separating/shattering, scattered spot stains) both fair.



**177: MONOBOSOM LACE TEA GOWN, c. 1908**

USD 800 - 1,200

Stock collar & yoke insert w/ silk & metallic chainstitch on cotton net, body elaborately constructed of corded tape w/ netted edging, cut linen florals, needle thread fillings in large overall floral design over silk chiffon & taffeta, silk chiffon elbow length puff sleeves w/ metallic tassels, pleated cuff & ruffles, CB closures, trained skirt, B 39.5", W 29.5", L 60"-71", (shattering to neckline, yoke & kick at petticoat hem, underarms damaged, broken brides, tarnish, 3" hole right front SH) fair-good. Ohio State Historic Costumes & Textiles Collection.



**178: TWO IRISH OR CHEMICAL LACE TEA DRESSES, c. 1910**

USD 400 - 600

1 cotton princess line tea dress w/ imitation Irish crochet chemical lace & mm Val lace insertions, horizontal & vertical rows of fine tucking, CB buttons closures, B 34", W 27", L 57", (shattering neckline trim, 0.75" hole back left skirt & 0.25" lowestlace band, 1 missing button, tiny-0.25" holes in lace throughout) very good; 1 cotton mull w/ Philippine hand embroidery & Irish crochet insertions to bodice, sleeves & extending over CF W into skirt, CB embroidered buttons w/ hook & eye at back of neck & 2 at W, B 37", W 23", L 55", (0.5"-3.5" repairs to hem, tiny-sm tears to left armscyes & SHs, tiny-0.25" spot stains CB) good. Ohio State Historic Costumes & Textiles Collection.



**179: CREPE DE CHINE & LACE EVENING DRESS, c. 1912**

USD 500 - 800

Asymmetrical evening dress of blush pink crepe de chine over w/ silk & linen levers lace on cotton tulle underdress w/ minimally boned buckram W, B 34", W 26", L 58", (broad light staining, tiny-0.5" spot stains throughout) very good. Ohio State Historic Costumes & Textiles Collection.

## Decades of Decadence



**180: CUTWORK & BOBBIN LACE TEA DRESS, 1910s**

USD 800 - 1,200

Linen w/ elaborate cutwork florals w/ needle fillings, yoke of cotton tulle w/ fine tucking, bobbin lace insertions, sleeves w/ bobbin lace insertions w/ thread baubles, Irish crochet insertions, skirt w/ Italian hemstitching, bobbin lace insertions & finished w/ woven band w/ thread baubles, CB hook & eye closures, B 42", W 27.5", L 60", (light discoloration, broken brides in lace, two 0.25" holes in neckline net, few spot stains, missing/loose closures) very good. Ohio State Historic Costumes & Textiles Collection.



**181: TWO SCHIFFFLI EMBROIDERED TEA DRESSES, LATE 1910s**

USD 300 - 500

1 ecru Schifflli embroidered cotton tulle, scoop neckline w/ ruched CF & SHs, short sleeves, scalloped edging manipulated at CB to create row of small keyhole openings w/ single button closure, 2 tiered skirt, original silk pongee slip, B 41", W 34", L 51.5", (2.5" seam opening front W, few spot stains, broad light tide marks to back) very good; 1 cotton tulle w/ rows of tucking at B, sleeves & skirt, Schifflli embroidered cotton mull integrated pinafore overdress w/ woven imitation fillet insertions, concealed SS & CF closures, B 34", W 24", L 49", (light underarm stains, 0.5" hole & 1" stain to lap, scattered spot stains, lace edges fraying) good. Ohio State Historic Costumes & Textiles Collection.



**182: TWO TULLE & GAUZE SUMMER DRESSES, 1910s**

USD 300 - 500

1 pinafore style of peach cotton gauze over cotton tulle faux undershirt w/ black silk velvet ribbon appliqué to SHs, cuffs & at & above hem, B 40", W 25", L 52.5", (light stains/discoloration to bodice & sleeves, heavier (light) stains to skirt & sashes) good; 1 cotton tulle w/ blue embroidered picot edges at wide draped collar, sleeves, cuffs & tiered skirt, B 33.5", W 27", L 51.5", (tiny rust stains, missing belt, light scattered spot stains, 0.75" hole CB collar, few holes in net) good. Ohio State Historic Costumes & Textiles Collection.



**183: ONE TEA DRESS & ONE LACE JACKET, LATE 1900-1910s**

USD 500 - 800

1 cream china silk afternoon dress w/ chemical lace applied to net collar insertion, at neckline & to sleeve tiers, 2 self-panaches below B, row of puffed self-bows along CB opening, shirred W, boned bodice, c. 1908, B 32", W 22", L 55.5"-59", (spot stains to trim, light stains & tiny-1" holes around hem, stains to seat, 1" repair left armseye underlayer); 1 ecru net jacket w/ chemical lace & mm embroidered appliqués, open B 48", L 28", (inking to inner collar, discoloration, many small spot stains, broken brides, tiny-0.25" holes esp in sleeve appliques) both good



**184: BRUSSELS MIXED LACE, SILK & CHIFFON EVENING GOWN, c. 1912**

USD 1,200 - 1,500

Bone silk satin evening gown w/ Brussels mixed lace collar & extended slv panels terminating in silvered crystal beaded & faux pearl fringe, manipulated ribbon & silk embroidery to net CF B panel over tape lace, tape lace sleeve edging & skirt panel cascading from front left & around hem, crepe chiffon overlay throughout w/ horizontal tucking at sleeves & fine vertical tucking over W front & back, crepe chiffon panels over back SHs to W terminating in beaded & faux pearl tassels at CB W over weighted silksatin falls, asymmetrical chiffon skirt overlay edged in silvered bead & faux pearl fringe, label "Lynch Pittsburg PA", B 38", W 28", L 55"-67", (lining shattered, missing closures, bead loss, 2" tear left armseye drape, net badly torn) good. OH State.



**185: AESTHETIC MOVEMENT DAY DRESS, LATE 1910s**

USD 500 - 800

3-pc Aesthetic movement cream silk pongee day dress c/o long sleeved dress & 2 over dress panels to be worn crossed or draped over SHs, all embroidered w/ floss silk in blue, copper & black at lower sleeve, W & as boarder on both overdress panels, B 41", W 40", L 49", (wear & few pulls to embroidery, many tiny pulls throughout) very good.

## Decades of Decadence



### 186: AESTHETIC MOVEMENT EVENING CLOAK, EARLY 20TH C

USD 1,200 - 1,500

Pale gold silk satin ankle length evening cloak w/ gold metallic embroidered bands to neckline & front yoke extending over SHS & terminating in V at CB & back SHs w/ silk tassels, CF hook & eye closures, ruched along front of ?sleeve? w/ same appliedband for shaping over arms, SH-SH 18", L 54.5", (tarnish, many pulls to lame, staining/discoloration, scattered tiny-small spot stains, 6" & 1.5" & several 1" stains above hem) good. From the Collection of A.T. Jones & Sons.



### 187: FIVE LADIES WOOL JACKETS, AMERICA, 1910s

USD 300 - 500

1 navy silk blend w/ satin reverse, late 1910s, label "Isaacs, Baltimore MD", B 37", W 35", L 28", (label faded, many tiny pulls/few holes); 1 grey wool frock, B 36", W 34.5", L 38", (tiny-0.5" holes, seam openings lining w/ stains); 1 tan twill wool w/ beige wool military reverse & cuffs, B 40", W 32", L 26.5", (many tiny-0.5" wear spots/holes, many tiny-1" stains, lining damaged); 1 grey wool flannel w/ label "WH Embick & Sons, Philadelphia? & ?11/2/11 Property of Chas Saake Jr. Costumer Philadelphia PA", B 37", W 32", L 25", (detached/incl button, tiny holes CB & right slv); 1 black wool gabardine w/ collar, cuffs & faux vest of silk plush, B 41.5", W 40", L 29", (tiny-0.5" holes/snacks, 1 button replaced/1 missing) all good-very good. A.T. Jones & Sons



### 188: LAME EMBROIDERED SILK VELVET COAT, PARIS, LATE 1910-1920s

USD 800 - 1,200

Deep teal panne velvet coat embroidered in lame chainstitch dense floral & foliate motifs above hem & cuffs w/ climbing tendrils reaching to SHs, mink fur collar, blue panne velvet lining extending & manipulated to form cuffs, CF opening edging & hem, label "Esther, Rue Volney, Paris", CH 44", L 42", SH-SH 18", (fur collar shedding/worn/cracked, tarnish, many pulls to embroidery, cuffs discolored) good. From the Collection of A.T. Jones & Sons.



### 189: BEADED STOLE & SILK CAPE, NEW YORK, 1910-1920s

USD 300 - 500

1 black silk crepe cape w/ CF tie closure & hem both w/ long fringe, lined in grey silk crepe, label "Franklin Simon & Co. Fifth Avenue, NY". SH-SH 18", L 42", (wear to fringe, 2" light stain CB lining) excellent; 1 black silk tulle Luneville embroidered w/ clear & blue beading, 21" x 100", (several tiny-1.5" holes near center, few tiny holes from broken brides) fair.



### 190: TWO BROADCLOTH COATS, 1910s

USD 400 - 600

1 cream wool broadcloth coat w/ peach pressed silk velvet to collar, CF opening, SHs & at cuff of dolman style caped sleeves, cording over SHs to row of needle thread buttons, chemical lace appliqués to caped sleeves & back of SHs, lined in natural linen, B 50", L 43", SH-SH 20", (light fading, trim worn, tiny-1" snacks, 1" wear spot back collar, 2.5" & 3" seam openings collar facing) good; 1 black fine wool broadcloth coat w/ black silk velvet edged w/ silk military braid, front face w/ metallic diagonal braid, black silk velvet & mm fillet panels, lined in bone silk moire, B 42", L 53", SH-SH 18.5", (lining shattered, trim worn, pulls to braid, wear to buttons/loops, scattered tiny-1" snacks) very good. From the Collection of A.T. Jones & Sons.



### 191: BROCADE & PANNE VELVET COCOON CAPE, 1920s

USD 600 - 800

Metallic weft brocade on blue silk ground w/ cream curly lamb convertible collar lined in blue silk velvet, drop W w/ intertwining self bands at transition to cerise blue panne velvet ?skirt? w/ single brocade covered button closure, lined w/ cream silk crepe, SH-SH 18.5", L 50", (wear/discoloration to collar, tarnish, minor velvet crushing, stain line 6" above hem, light fading to left side) good. From the Collection of A.T. Jones & Sons.

## Decades of Decadence



### 192: FIVE FUR OR VELVET COATS, BALTIMORE, 1920-1940s

USD 400 - 600

1 tan Persian lamb coat w/ fox fur collar & exceptional silk satin lining w/ voided velvet insertions & patch pockets, silk crepe panel at CB all w/ silk feather stitching & blue silk satin piping, large velvet & self pockets, 1920s, B 45", L 45", SH-SH 17", (shattering lining, 1.5"-5.5" seam openings left interior pocket, b/t lining & collar, collar fur, & right arm'scye) good; 4 black rayon velvet coats w/ white fur collars & synthetic lining: 1 B 38", L 57", SH-SH 18", 1 B 36", W 28", L 57", SH-SH 18", 1 B 40", W 34", L 59", SH-SH 19", 1 B 38", W 36", L 54", SH-SH 18", label "Hutzler Brothers Co. Baltimore", (all w wear/shedding & cracking to fur collars, varying shattering & discolored linings, minor crushing velvet) all fair-good. A.T. Jones & Sons



### 193: TWO VELVET COATS, 1930-1940s

USD 300 - 500

1 emerald green silk velvet evening coat w/ narrow standing partial collar, asymmetrical front closure at left side w/ 2 self-cover button closures, lined in cream crepe back satin, B 40", W 34", L 54"-59", (scattered tiny-0.25" wear spots/holes, tiny black spot stains across B, many tiny-1" light stains, hem discoloration, 6" stain right front hem, label removed, minor shattering to lining) good; 1 black velvet w/ free front, black satin piping horizontally across Ragland sleeve & CB, open front B 42", L 42", SH-SH 21", (crushing esp around hem & neckline, 1" & few tiny-0.25" spot stains right sleeve & back right SH) excellent. From the Collection of A.T. Jones & Sons.



### 194: GROUP OF ATHLETIC GARMENTS, AMERICA, 1930-1940s

USD 300 - 500

1 blue sweater w/ tufted raised letter "B", label "Edw. J. Rose Sportswear Buffalo, NY", B 34", W 26", L 24.5", (light wear, minor pilling, label worn); 1 "Buccaneers" t-shirt, label "Red Fox Athletic Clothing", unstretched B 32", L 26.5", (discoloration); 1 pair green shorts, label "Wright & Ditson Athletic", W 32.5", L 15.5", inseam 4.5", (fading/dyscoloration, wear at W, scattered tiny-0.25" spot stains); 1 white wool sports jersey w/ #9, label "W.M. Levin Mills Knit'g 100% Pure Worsted", unstretched B 32", L 29", (light stains/dyscoloration/wear, 0.25"-0.5" repairs throughout) all good-excellent.



### 195: LEATHER AVIATOR JACKET, 1930-1940s

USD 500 - 800

Brown leather aviator jacket w/ zip closure, single diagonal zip B pocket, expanding aviator patch pockets w/ additional slash pocket, fleece & quilted lining, CH 46", L 29", (very worn, 1.25" tear bottom left zip, tiny paint spots left CH, lining worn/torn at SHs/underarms, 3" tear left SH, 1" & 0.75" tears right elbow, 2.75" repair right sleeve below elbow) fair-poor. From the Collection of A.T. Jones & Sons.



### 196: US POSTAL CARRIER UNIFORM, AMERICA, 1957

USD 300 - 500

US Post Office Uniform in blue wool twill w/ notched lapel & convertible funnel collar, maroon braid & edgings, SH patch reading "Post Office Dept. USA", buttons stamped "Waterbury Co. Conn." & "POD", inner pocket label "Lurose Army & Navy No 96 U.S. Pat Office, Mr. John Staub All Wool, Sep 25 1957", CH 47", W 45", L 28", (few tiny holes/wear spots, fading upper back slvs, 1.5" seam opening left lapel lining, button tarnish) excellent. From the Collection of A.T. Jones & Sons.



### 197: TWO BENGAL LANCER COATS, LONDON, 1938

USD 800 - 1,200

2 blue broadcloth Bengal Lancer coats w/ standing collar of red broadcloth w/ gold metallic galloon, cross over apron front skirt w/ concealed composite button closures, open tails, 1 w/ label damaged but legible "London, 1938", 1 CH 43.5", W 39.5", L 41.5", (tarnish, lame around collar worn, label badly worn/missing, scattered tiny-0.25" holes, hem modified, internal left H button broken); 1 CH 42", W 38.5", L 39.5", (lining torn at collar, label badly worn/missing, tarnish, 0.5" repair & tiny hole left SH, few tiny holes right SH, trim worn, 5.75", 2.5" & 2" seam openings CF button panel) both good. From the Collection of A.T. Jones & Sons.

## Decades of Decadence



### 198: TWO WOOL BROADCLOTH LIVERY COATS, 1840s & 1860s

USD 300 - 500

1 scarlet w/ white broadcloth band collar, cuffs & CF opening edged in metallic galloon w/ decorative buttons & faux button hole, single hook & eye closure at throat, silver rosette appliqué, CH 39.5", L 41", (epaulets removed, lining worn/discolored, seam openings, many tiny-0.5" holes, 0.5" & 0.75" repairs left CF H, wear/dicoloration, 2" seam opening left SH, many 0.5"-2" holes to tails); 1 w/ narrow collar, decorative CF buttons & faux button holes, 2 deep tail pockets w/ shaped tabs, 1840s, button stamped "Birmingham Armfield's", CH 45.5", L 39", (inking & 1 tear & wear to lining, wear/dicoloration, many tiny-1" holes/snacks, underarm stains, lining very worn); both fair-good. From the Collection of A.T. Jones & Sons.



### 199: TWO AMERICAN RAILROAD CONDUCTORS UNIFORMS, 1891 & 1910

USD 400 - 600

Both navy wool broadcloth: 1 Pennsylvania Railroad uniform jacket w/ silver hand embroidered ?PRR? insignia, label ?Wanamaker & Brown, & ?May 11, 1910?, buttons stamped "American by Supply Co. 24 Park Place NY" & "PRR", CH 45", L 39", (wear/tarnish to lame, lining shattering, 1 missing button, many tiny-0.5" holes/snacks, 0.5" seam opening left collar, collar patches added messily); 1 Baltimore & Ohio Railroad conductor uniform jacket w/ silver bullion ?BO? insignia, label "Pettibone Uniform Tailors Cincinnati O? & ? APRIL 12TH, 1891?", buttons stamped "Scovill MF'G Co. Waterbury" & "B&O", CH 42", L 33", (cuffs frayed/altered, scattered tiny holes, tarnish to lame, light wear) both good. From the Collection of A.T. Jones & Sons.



### 200: CAMPFIRE GIRLS UNIFORM, AMERICA, 1930s

USD 300 - 500

Campfire Girl's cotton twill uniform w/ painted wood, glass & ceramic beads, hand embroidery including campfire girl insignia, leather edging & appliqués, CH 44", L 48", (heavy staining, bead loss/wear, lines of staining above hem from alteration, wear to suede fringe) good.



### 201: FOUR PIECE WAC NURSE UNIFORM, AMERICA, 1950-1951

USD 300 - 500

Women's US Korean War Nurse uniform c/o 2-pc wool twill skirt suit, cotton percale dress & wool twill garrison cap, buttons stamped "Waterbury Companies Inc.", B 42", W 33.5", L 27", skirt label "Fashionbilt 100% Wool, Pat. Date 22 Dec 50", W 31.25", L 27.25", hat label "Designed to Fit a Headsize 22", laid flat L 11", Ht 3.5", circ. 23", (inkings to jckt & hat lining, button & pin tarnish, few scattered snacks, few spot stains & holes to skirt, 7 fusible patches for repairs, label sewn diagonally); cotton dress w/ label "Dress, Cotton, Taupe Women's 16S Jonabelle, Dated 8 Jan. 1951", belt stamped "M9960", B 41", W 28", L 44.5", (belt stiff, 0.25"-0.5" stains in sleeve cuffs, 1" stain CB, scattered tiny stains) all good-very good. A.T. Jones & Sons.



### 202: WOMEN'S WWII RED CROSS UNIFORM, AMERICA, 1940s

USD 300 - 500

Heather wool twill women's WWII Red Cross uniform c/o jacket w/ shirt collar, CF ?+? motif buttons, wool epaulet w/ grosgrain ribbon w/ red soutache & single ?+? motif button & matching skirt, SH patches reading "Camp and Service Hospital Council Service", B 44", W 35.5", L 27", skirt W 32", L 29.5", (discoloration to SH ribbons, tarnish/rust to buttons, 0.25" holes right H, few 0.25" holes across back, seam allowances on skirt fraying) jacket good, skirt excellent. From the Collection of A.T. Jones & Sons.



### 203: THREE DAY DRESSES, 1940-1950s

USD 300 - 500

1 blue crepe dress w/ draped cowl faux halter neck over cream mm lace, self belt w/ paste buckle & long peplum over flared skirt, B 38", W 32", L 46", (few undone belt tacks, most stones on belt buckle missing, right loop at belt end undone, scattered shatters, light underarm stains) fair; 1 silk crepe w/ multicolored leaf & grouped spade outlines on black ground, B 42", W 34", L 44", (fraying/wear to seam allowances, belt missing, 1.5" seam opening right SS W, tiny wear spots W) excellent; 1 black crepeback satin w/ self-covered buttons at CB & wrist, draped skirt panel w/ paillette embellished flat bow to left front H, label "Original by Olga", (B 42", W 32", L 50", (pailletes worn, tiny pulls, belt missing, light stains seat & CF B) excellent.



## Decades of Decadence



### 204: THREE DAY OR HOUSE DRESSES, 1940-1950s

USD 300 - 500

1 green windowpane plaid on cream ground w/ shirt collar, CF button & hook & eye closures, patch pockets at left B & right H, flared skirt, label "The Surrey Golfer", B 40", W 31", L 45", (1.25" seam opening left SS, missing right H pocket button, 2 CF seams open & pinned, hem undone, few tiny holes); 1 cotton organdy printed in trellis motif w/ clear plastic raspberry button closures, pleated SHs & skirt, matching tie belt, B 38", W 32", L 46", (1" seam opening left armscye, no belt closure); 1 blue syntetic shantung w/ shaped shirt collar & turn back collar both mirrored w/ white peekaboo facings, CF self-covered buttons, belt label "Atlas Tex", B 40", W 30", L 47", (1" seam opening right armscye), (all w/ light discoloration) all fair-very good.



### 205: THREE SUMMER DAY OR PLAY ENSEMBLES, 1950s

USD 400 - 600

1 playsuit w/ block printed tree motif on chevron patterned cotton ground w/ blue piping at neckline & SH straps w/ button closure, matching triangular wrap/headscarf, B 38.5", W 33", H 46", L 30", shawl Wd 52", Ht 25", (4" opening lining, sm holes/spotstains); 3-pc salmon treated cotton summer ensemble, dress w/ CF self-cover buttons, cropped jkt w/ scalloped lapel & free front, matching belt, all w/ Schiffli embroidery, jkt B 37", W 30", L 45.5", dress B 40", W 32", L 15.5", SH-SH 17", (seam allowances fraying); 1 white ribbed cotton w/ slight surplice B, SH straps w/ cross over & buttons to back neckline, fitted bodice w/ chevron piecing & deep patch pockets from H to lap, B 35.5", W 28", L 46", (seam allowances fraying, taken in) all good-excellent



### 206: TWO JEAN PATOU DAY ENSEMBLES, PARIS, 1950s

USD 400 - 600

2-pc wool blend skirt suit w/ black CF frogs, lined in silk taffeta, label "Jean Patou Paris", jacket B 39", W 35.5", L 22", skirt W 26", L 23.5"-26", (CF buttons removed & holes closed w/ cord closure added, few pulls, shattering skirt hem lining, wear to W band from hangers) excellent; 2-pc wool ensemble c/o overdress & gimp underskirt, label "Jean Patou Paris", dress B 39.5", W 30", L 41", gimp skirt W 26", L 26", (neckline re-enforced, wear, pulls, lining torn at darts, 2 snaps detached/incl, pilling, darts in gimp skirt opened & W band altered) very good. Ohio State Historic Costumes & Textiles Collection.



### 207: CEIL CHAPMAN & PAULINE TRIGERE COCKTAIL DRESSES, AMERICA, 1960s

USD 300 - 500

1 black silk tricot dress w/ bateau neckline, rattail looped fringed bodice, fitted calf length skirt w/ asymmetrical gathering into CF W, 1960s, label "Ceil Chapman", B 34", W 25", L 43"-46", (three 0.5" sections of missing top stitching at CB zip); 1 long sleeve black wool blend crepe dress w/ circular ruffle collar & shaped self-ruffle over wrist cuff, early 1960s, label "Pauline Trigere", B 38", W 30", L 40.5", both excellent.



### 208: BEADED SILK SATIN EVENING GOWN, MID 1950s

USD 400 - 600

Beaded strapless cream silk satin evening gown embellished at bodice & front skirt panel w/ branches of silk & metallic variegated cording & leaves of silvered & gilded seed beads w/ paste drops w/ plain bodice side panels into flat bow at CF W, CB zip closure, B 35", W 27.5", L 52", (minor bead loss & pulling to lame, light underarm stains, few tiny spot stains, light stains hem & seat) excellent.



### 209: CHANTILLY LACE & SILK SATIN EVENING GOWN, FRANCE, 1950s

USD 800 - 1,200

Strapless cream silk satin & white Chantilly lace evening gown w/ sweetheart neckline, broad pleated silk satin W, full flared skirt w/ silk satin pleated swags, manipulated rose buds & arabesque appliqués to Chantilly lace overlay, boned bodice, label "Chantilly Lace, Made in France", B 34", W 24", L 45", (underarm stains, scattered tiny spot stains, tiny-1" stains & many tiny pulls to sash) very good.

## Decades of Decadence



### 210: SCOTT PAPER OP ART PAPER CAPER MINI DRESS, AMERICA, 1966

USD 400 - 600

Scott Paper Company shift was an advertising gimmick used to promote the company's disposable tableware collection in 1966, label "Paper Caper by Scott", B 38", L 37.5" size S, box 13.75" x 11.75" x 1.375", (box discolored, stained & crushed, original interior bag missing, broad stains/discoloration, wear at collar & armholes, dress creased from storage, pulling at SH seams) good. Identical dress held in MET collection accession #1995.444.2



### 211: SCOTT PAISLEY PAPER CAPER MINI DRESS, AMERICA, 1966

USD 400 - 600

Paper dress in yellow & white bandana paisley motif on red ground w/ original box & promotional materials, the Scott Paper Company paper shift was an advertising gimmick used to promote the company's disposable tableware collection in 1966, label "Paper Caper by Scott", B 38.5", L 37.5", size S, box 13.75" x 11.75" x 1.375", (box discolored, dented & worn, dress creased from storage, hem worn) unworn condition.



### 212: BARBARA MATERA FOR DINA MERRILL JACKET, NEW YORK, 1990s

USD 800 - 1,200

Black & purple chenille embroidered lace fitted jacket w/ faceted glass paillettes & sequins, rayon velvet ruffle w/ iridescent facing, fitted W & flared shaped peplum, lined in silver & lavender tissue lame, label "Barbara Matera Ltd. Miss Merrill New York", made for Dina Merrill, B 37", W 28.5", L 26"-32", (many pulls to chenille, fraying at lining edge, lining discolored, collar lining worn & some pleat crushing, partially undone closure at W) good.



### 213: BARBARA MATERA FOR CANDICE BERGEN EVENING DRESS, NEW YORK, 1980s

USD 800 - 1,200

Black velvet bias cut evening dress w/ slender SH straps, V-neckline w/ gathered diagonal under bust meeting at V-neckline, CB zip closure, label "Barbara Matera Ltd. Miss Bergen New York", B 34", W 26", L 60.5"-65.5", (significant bead loss at SH straps, hem altered & dirty w/ few spot stains, minor pulling at neckline) good.



### 214: FINE SILK EMBROIDERED GENTS WAISTCOAT, c. 1800

USD 1,200 - 1,500

Gent's cream embroidered waistcoat embroidered in spot drouget w/ faceted foils backed paste bordered w/ silver bullion, embroidered borders w/ floral baskets in varied woven patterns hanging from draped foliate swags & branches, canary motifs both perched & on the wing, possibly English, CH 39", W 34.5", L 22.5", (very light stains CF, scattered tiny spot stains/age spots, tide marks left front W, shattering/many tiny holes to lining, 5" seam opening CB collar, very minor stone loss) good-very good.



### 215: SILK SATIN UNDERDRESS, c. 1816

USD 1,200 - 1,500

Fine twill silk satin w/ warp pattern twill silk ribbon w/ woven grouped & looped pico edges appliqué above hem & bows on sleeve w/ warp fringe, drawstring neckline front & back & at back W, likely part of an ensemble similar to reference phototaken from La Belle Assemblée - March 1816 & described ?Saxe-Cobourg robe for evening full dress?, B 36.5", W 32.5", L 50.5"-54", (washed, underarm stains, 1.5" tear left neckline & 1.75" front W band, tiny-0.75" holes left H, 1"-2" light stains lap, few scattered 0.25" holes throughout) very good. Ohio State Historic Costumes & Textiles Collection.



### 216: PATTERNED SILK PELISSE, c. 1820

USD 1,500 - 2,000

Patterned silk inspired by fashionable lace patterns w/ robins egg blue silk Van Dyke appliqué to neckline, CF opening, SHs, above back W, cuffs & hemline all edged w/ silk cord w/ silk thread covered decorative buttons at each apex & in single row at CB W, lined in silk gauze, B 35", W 28", L 49.5"-52", (lining shattered/partially missing, shattering to underarms, hem, collar & cuffs, light staining throughout, conservation work done at underarms, shattering to CF opening) fair. Ohio State Historic Costumes & Textiles Collection.

## Decades of Decadence



**217: BLACK SILK MOURNING DRESS, c. 1830**

USD 1,000 - 1,200

Very fine black silk twill w/ piping to stays of standing collar, SH seems, armscyes, cuffs, along CF opening & W band, gigot sleeves, applied CB bow & flat leaves both edged w/ bias band binding, glazed book linen hem facing, B 37.5", W 31.5", L 57.5", (underarm stains, inking to neck lining, 17.5" seam opening right bodice W, 7.75" & 3" sections of piping detaching along CF opening, minor shattering collar & cuffs, few pinholes) good. Museum of History & Industry.

---



**218: WEDDING GOWN & PELERINE, EARLY 1840s**

USD 1,500 - 2,000

Celadon sprig patterned silk on ribbed ground w/ ecru net at neckline & cuff w/ spot & floral motif, piped neckline, armscye, bodice darts & seams, W, sleeve seam, cuffs & pelerine edge, graduated rows of bias band ribbon panaches w/ bows at CF neckline, B & apex of pelerine, radiating applied pleated panels at CF B, SHs w/ applied tiered ruffles & attached full sleeve pleated to fitted cuff, grosgrain hem saver, bodice lined in glazed linen, pelerine & hem facing of glazed cotton, B 33", W 26.5", L 55.5", shawl 29.5" x 21.5", (underarm stains, light stains throughout, 1.5" hole lap, 3" seam opening left SS, 2 detached fans left slv, 2 loose on right, slv & hem lining shredded, SS bones removed, pelerine lining damaged & stabilized) both good. Ohio State

---



**219: TWO SILK SATIN DINNER DRESSES, 1890s**

USD 500 - 800

2-pc black silk satin & taffeta w/ black jet passementerie appliqué, yoke & stock collar of chemical lace over silk satin w/ pink plush bias trim, skirt w/ knife pleated taffeta hem flounce, B 33", W 22.5", L 16.5", skirt W 26.5", L 41.5", (bead disease/loss, broken brides, shattered collar lining & W band, sash detaching, sm tears right skirt SS & CB opening, hanger imprints) fair; 1 French black silk velvet stock collar, slvs & B, faux vest & skirt of blue silk satin w/ ribbed stripe, steel cut beadpassementerie to collar, bodice front & cuffs, twist silk cord at neck & cuffs, B 34", W 24", L 18.5", skirt W 23.5", L 37-44", (detached/incl button, 6" tear button facing, seam openings collar facing & left B panel, stains to hem) all fair-very good.

---



**220: LIBERTY AESTHETIC MOVEMENT DAY DRESS, LONDON, 1890-1905**

USD 500 - 800

2-pc day dress in celadon cashmere w/ cream silk full sleeve pleated to SH & smocked at cuff & pleated yoke insertion into smocked collar, cream silk embroidery to yoke & above hem, shaped smocking created to fullness at bodice front & back & pleated into W, paired button & loop closures at CB, label "Liberty & Co Artistic & Historic Costume Studio", B 32.5", W 28.5", L 14.5", skirt W 27.5", L 32.5", panel 11.5" x 76.5", (label faded/torn, 1 detached/incl button, shattering slvs, collar, cuffs & yoke, tiny-1" stains throughout, tiny holes CF B, light fading, 0.5" stain lap, missing underskirt, few tiny holes to panel) poor. Ohio State.

---



**221: AMELIE BOSCH DINNER GOWN, PARIS, c. 1897**

USD 800 - 1,200

2-pc dinner gown, cream silk satin stock collar w/ lace panache at CB, bodice of Chiné à la branche silk taffeta w/ satin ribbon stripe w/ cross over bodice front & broad gathered net panels w/ applied tape lace over sage ribbed silk, modest leg o' muttonsleeve, sage ribbed silk skirt into princess line corselet w/ manipulated panache at CB, ribbed silk w/ tape lace appliqué & chainstitch lace, label "Amelie Bosch & Cie Boulevard Des Italiens Entrée 2 Chaussee d' Antin Paris", B 39.5", W 27", L 20", skirt W 28", L 46"-52", (neckline, underarms, W lining shattered, missing CF closures, bones poking from casings, skirt edges shattering, 3.25" seam opening CF lining, laces N/I, spot stains skirt, 4" stain hem, broken bones) bodice fair, skirt good. OH State

---



**222: BEADED CAPELETS & MANTLE, 1880-1890s**

USD 300 - 500

1 w/ deep V checkerboard front in black sequins & beads w/ tassels at each terminus, bugle beaded bands at neckline, outer edge & center, vermicelli & leaf motif in short bugle beaded V to CB, long beaded fringe at back & over SHs, Wd 18", L 14.5"-22", (minor bead loss, edges raw/slightly uneven) excellent; 1 black silk faille mantle heavily beaded in floral motif w/ beaded fillet netting over SHs & arms w/ beaded fringe terminating triangular French jet, SH-SH 16", L 24", (shattering esp at collar, bead loss & broken brides, missing CF closures, W cord torn away 1 end) good; 1 silk sateen short capelet w/ shaped standing collar & beaded fringe, collar circ. 16", L 9", (beaded net overlay badly torn, bead loss) fair.

---

## Decades of Decadence



### 223: TRAINED EVENING GOWN & GIRLS TEA DRESS, AMERICA, 1910s

USD 400 - 600

1 black silk chiffon evening gown w/ black silk soutache, faceted jet & passementerie, chemical lace & tucking, black silk underdress, label "Best & Company New York", B 38.5", W 24", L 52"-69", (broken brides w/ few holes/tears up to 1.5" at cuffs & neckline, wear to braid at W, two 3", 2.5" & 0.25" tears CB opening); 1 girl's cream cotton net w/ chemical lace & pink silk satin sash, label "Best & Co. New York", CH 31.5", W 27", L 47", (scattered tiny-0.25" spot stains, ribbon shattering, discoloration, 0.5" & 0.75" stains CB closures, inking inside W band) both good.



### 224: TWO SUMMER DAY OR PARTY DRESSES, 1920s

USD 300 - 500

1 pink cotton georgette w/ pink linen shirt collar, applied CF & H bands & shaped hem, embroidered imitation buttons at either side of CF, ruched H panels, B 36", H 34", L 40", (small pulls, tiny-0.25" spot stains, 1.75" seam opening left pocket & 2.5" left armhole, left belt loop partially detached, tiny-0.25" holes left H); 1 printed w/ florals in shades of orange, teal & brown on cream crepe chiffon ground w/ aqua crepe chiffon tie belt, hem & single bow at left SH, B 35", H 37", L 35.5", (skirt taken up 3" w/ fabric present, light underarm stains, tiny pulls & spot stains, bow fraying left SH, few tiny holes throughout) both good-very good.



### 225: SAGE GREEN SILK DAY DRESS, 1920s

USD 400 - 600

Sage green silk day dress w/ shirt collar into asymmetrical CF V w/ left side inserted under right to create hanging tab w/ complex manipulated box pleated ruffle at end for jabot effect, long sleeve w/ smocking along top of SHs & same ruffle at cuff, pleated along SS for shaping, tiered calf-length skirt w/ same ruffles, 1920s, B 36", W 34", L 45", (sleeve seams altered & stitch marks visible, stains to right sleeve, few tiny pulls & holes, underarm stains, scattered 2"-3.5" light stains, scattered light spot stains) good.



### 226: MANTON DE MANILLA & PHILIPPINE EMBROIDERED TEA DRESS, 1920s

USD 400 - 600

1 cream Manton de Manilla dress w/ crepe chiffon bodice overlay, glove length hanging sleeves & pleated draped W band w/ tassel at left H, mm embroidered lace as collar & at neckline, skirt slit & hem trimmed w/ long hanging shawl fringe, B 37", W 38", L 47", (scattered sm spot stains & pulls, light underarm stains, 5" seam opening left W panel) very good; 1 Philippine hand embroidered cotton net w/ square neckline, short flared sleeves, fillet insertions & mm lace insertions, B 34", W 34", L 40", (light discoloration, sm spot stains, 2" tear right armhole, tiny holes in net) good.



### 227: TWO DAY SUMMER DRESSES, 1920s

USD 300 - 500

2-pc baby blue novelty woven Art Deco intermittent stripe short sleeved blouse w/ blue rayon ribbon edging to sleeves & V-neckline w/ small bow, matching underdress w/ gimp bodice & pleated skirt, dress B 36", W 33", L 39.5", bodice B 36", W 34", L 21.5", (light stains, underarms worn, seam strain at bodice W SS, few tiny holes, fraying to blue panel edges gimp bodice w/ 4" seam opening, 1.5" stain to B & 0.75" pink stain to lap) fair; 1 lavender silk chiffon w/ long sleeves, drop W w/ short fallat front left H, pieced flared lower skirt, lined in purple silk sateen & chiffon, B 38", W 36", L 42", (2.5" stain w/ 0.5" shatter CF, stains/seam openings right underarm, 1.25" shatter at seat & 0.25" & 0.5" stains to seat, fraying to hem) good.



### 228: TWO CHIFFON SUMMER DRESSES, 1920s

USD 500 - 800

1 burgundy voided chiffon velvet in abstract floral & foliate motif, scoop neckline w/ self-bow at right SH, long full sleeve w/ narrow cuff, drop W w/ attached skirt ruched along back, original tie belt, B 44", W 40", L 44", (4 tiny-0.5" holes left SH, 0.25" spot stain CB, 3 pinholes left SH blade) excellent; 1 printed chiffon w/ scoop neckline trimmed w/ bias cut self band, single hook & loop closure at CB for small keyhole, ruched SHs & front W, full glove length sleeves w/ elasticized cuff, B 38", W 30", L 48.5", (light staining, elastic shot, tiny-0.5" spot stains throughout, seam allowances raw, 0.5"-1" stains seat) very good.

## Decades of Decadence



### 229: HEAVILY SEQUINED PARTY DRESS, 1920s

USD 400 - 600

Peach crepe chiffon party dress w/ corrugated stamped ombre gelatin & petal drop sequins radiating from CF & CB, Luneville embroidered, B 38", W 40", L 41", (slip badly damaged, sequins damaged/warped w/ minor loss, underarm stains, shattering around armholes esp. underarms, SH seams repaired, scattered tiny-0.5" holes, damage to neckline at SH straps) fair.

---



### 230: DRAMATIC BLACK & RED REVERSIBLE VELVET CAPE, 1920s

USD 500 - 800

Black & red silk reversible silk velvet cape w/ dramatic ruffled & scalloped petal collar, CF extended self-tie closure, 1920s, SH-SH 18", L 42", (velvet pile worn at collar gathers, minor areas of crushing, few scattered 0.25" white spot stains) excellent

---



### 231: BEADED LAME SILK CHIFFON PARTY DRESS, MID 1920s

USD 500 - 800

Geometric lame silk chiffon party dress w/ scoop neckline, floating panels from left SH front & back & back right SH into drop W w/ additional floating panels at both sides of skirt all embellished w/ silver & crystal beading to emphasize existing lame motifs, china silk hem facing, B 34", W 34", L 42", (beads detached under front left drape, many tiny pulls, minor bead loss, light bands of tarnish, 3.25" shatter spot left B, wear/trim loss to armholes, dark tarnish to seat) fair.

---



### 232: HEAVILY SEQUINED & BEADED PARTY DRESS, 1920s

USD 800 - 1,200

Silk tulle party dress heavily embroidered w/ iridescent sequins, short & long crystal bugle beads & w/ lame thread fillings, scoop neckline, armhole & hem all edged w/ single row of faux pearls, B 40", W 33", L 47", (minor bead/sequin loss, lame tarnish, few broken pearls, tiny pulls, tearing/separations at SH straps w/ re-enforcements & along W line) fair-good. Ohio State Historic Costumes & Textiles Collection.

---



### 233: SILK GEORGETTE BEADED PARTY DRESS, 1920s

USD 400 - 600

Black silk georgette sleeveless evening dress embroidered w/ faceted short & long bugle beads in floral & foliate motif w/ scalloped borders, scoop neckline, Van Dyke hemline w/ knife pleated self-ruffle, silk braid tie belt w/ tassels, unstretched B 28", W 26", L 43", (slip N/I, bead loss, 12" seam opening left SS) excellent.

---



### 234: HEAVILY BEADED CHIFFON PARTY DRESS, 1920s

USD 500 - 800

Cream crepe chiffon party dress w/ elaborately beaded & sequined scoop neck body in floral garland motifs alternating bands of silver ball & various silver bugle beads, silver sequins, short chatoyant bugle beads, silvered crystal bugle & seed beads w/ white iridescent sequined florals lightly outlined w/ silvered bugle beads & occasionally highlighted w/ silver ball beads, skirt heavily beaded in graduated rows of silver bead beaded alternating w/ iridescent white sequins, B 38", W 36", L 41", (minor bead loss, few broken beads, underarm stains, minor seam strain & tearing at SH straps, scattered spot stains) good.

---



### 235: RAOUL DUFY INSPIRED PRINTED BLOUSE, 1920s

USD 400 - 600

Multicolored synthetic blouse in style of Raoul Dufy w/ roses & medallions containing theatrical vignettes on black ground, long sleeve w/ fitted cuff & 2 button closures, scarlet bias band edging to neckline & applied horizontally to left side for faux Russian closure w/ decorative buttons, label "Size 17? & w/ instructions for care, B 38", L 31", (belt missing, 0.5" very light stain left H) excellent.

---



## Decades of Decadence



**236: LAME EVENING JACKET, 1930s**

USD 400 - 600

Red & gold lame evening jacket in Ottoman inspired undulating graduated scalloped petal motif w/ jewel neckline, elbow length raglan sleeves, composite button closures notched & painted w/ gold in clever imitation of coiled chain, B 40", W 37", L 29.5", (buttonholes repaired, few small spot stains to lining, few tiny pulls to lame) excellent.

---



**237: TWO WEDDING DRESSES, 1920s & 1930s**

USD 300 - 500

1 trained mm lace wedding gown w/ draped cowl to V-neckline, long sleeves shaped over hand w/ snap closures at wrist, SS snap closures, circlet headdress of wax flower buds on cream silk satin, w/ slip included, B 34", W 26", L 58"-88", headdress circ.21.5", Wd 0.5"-2.5", (scattered broken brides, tiny-0.75" holes in lace, minor fraying, discoloration/warping to wax florals on headdress, minor warping to wire) headdress fair, dress very good; 1 cream wedding dress w/ Honiton lace yoke & ruffle overSHs & to W, attached square SH train, B 34", W 36", L 41"-64", (discoloration, 2" stain left SH, 3" light stain right B, sm shatter areas, scattered tiny-0.25" spot stains, underside of train hem dirty/stained) fair.

---



**238: DEVORE SILK VELVET EVENING DRESS, 1930s**

USD 400 - 600

Purple silk velvet w/ standing ruffle collar, B 40", W 32", L 58", (shattering to sheer panels CF & sleeves, 1" seam opening left front W, significant crushing to velvet, 1" tear left sleeve cuff) fair.

---



**239: SILK VELVET EVENING DRESS, 1930s**

USD 300 - 500

1 buttercream silk velvet evening dress w/ draped collar, smocking at yoke & top of batwing sleeves, inverted U-shaped empire front W, self-covered buttons at CB & wrist, B 40", W 28", L 60", (many tiny spot stains, 3.5" stain lap, 3" repair front right armscye, few tiny spots of crushing, 2.5" repair back left H seam, 3" repair back right SS at hem) very good.

---



**240: SILK LAME EVENING DRESS, 1930s**

USD 800 - 1,200

Periwinkle silver lame evening dress w/ wide V-neckline, gathered puff cap sleeves w/ ruching at front & back SHs, smocking under B along inverted V-shaped empire W, CB closure w/ self-covered buttons, full four panel skirt w/ let-out knife pleating at back, B 40", W 29", L 55"-58", (broad discoloration esp in skirt, scattered tiny pulls to lame, hem lightly worn) very good.

---



**241: CREPE CHIFFON PARTY DRESS, 1930s**

USD 400 - 600

Resist dyed & printed crepe chiffon party dress in bright bouquet motifs, scoop neckline, circular short ruffled sleeves, geometrically pieced gored skirt, black silk slip included, B 34", W 32", L 55", (minor fraying at hems, few tiny holes & spot stains, belt missing, 0.5" holes/wear spots H seam corners, 2" stain cluster CB hem) very good.

---



**242: SILK CREPE & CHIFFON EVENING GOWN, 1930s**

USD 800 - 1,200

Periwinkle crepe chiffon & silk crepe evening gown w/ sweetheart neckline, spaghetti straps & draped chiffon overlay w/ short sleeves, circular drape from SHs over CB, horizontal cartridge pleated W bands from either side of CF to row of self covered buttons at CB, slightly flared floor length skirt w/ draped panel from CF W around back of knees, B 31.5", W 27", L 60", (tiny-0.75" light spot stains, fraying/raw edges of drape neckline, light tide marks at hem, few tiny holes back left SH blade, CF hanging loop missing) very good.

---

## Decades of Decadence



**243: GRAPHIC ARROW MOTIF COCKTAIL DRESS, EARLY 1940s**

USD 500 - 800

Black satin back crepe dress, V-neckline w/ layered cotton tape insertion at B, long sleeves w/ white painted metallic nailhead piped frosting star studs arranged in arrow motif along back of sleeves, row of self-covered buttons at CB, let out pleats at lap, Talon SS zip closure, B 36", W 30", L 40", (light wear to paint on studs, belt missing, few tiny wear holes/pulls, 1.25" seam opening left SH, 1" partially repaired hole seat) very good.

---



**244: GUSTAV BEER SILK CAPE, PARIS, LATE 1920s**

USD 800 - 1,200

1 black silk crepe cape w/ knife pleated collar, extended front ties, stepped modified crown foot headed tassel appliqués arranged in tiers along arms & in rows at CB, handkerchief hemline, label "Beer 7 Place Vendrome Paris", SH-SH 18", L 36", (tiny-0.75" spot stains, tiny pulls, 5" seam opening right collar, few tiny holes around hem) good. From the Collection of A.T. Jones & Sons.

---



**245: ADRIAN WOOL SKIRT SUIT, AMERICA, 1950s**

USD 1,200 - 1,500

Khaki green wool broadcloth skirt suit, asymmetrical cross over front w/ decorative self ties, sleeve cap into full silk sleeve lining w/ shaped open over sleeve caught at front & back of armscye, jacket lined in brown silk crepe, calf length matching skirt w/ shaping darts from W, label "Adrian Original" & "Bonwit Teller Fifth Avenue New York", B 38.5", W 27.5", L 25", skirt W 26", L 27.5", (minor discoloration to neckline, underarm lining stained, few tiny snacks/holes in sleeves, light 0.25"-0.5" spot stains CF, 1 tiny hole & 1.25" stain lap, few spot stains to skirt) good.

---



**246: CEIL CHAPMAN SILK EVENING DRESS, AMERICA, 1950s**

USD 500 - 800

Silk satin evening dress w/ deep surplice fold-over neckline bodice pleated to W w/ draped tabs, spaghetti straps, piped W, narrow full length skirt w/ kick at CB, label "Ceil Chapman", B 35.5", W 25", L 54.5", (SH straps shortened in back w/ discoloration) excellent.

---

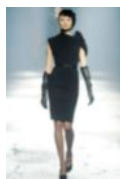


**247: CARDIN SEQUIN ENCRUSTED EVENING SHEATH, PARIS, 1960s**

USD 500 - 800

Sequin encrusted long sleeved sheath dress in shades of black, gold, blue, purple & green w/ band collar, CB zip closure & slit, label "Pierre Cardin Paris New York", B 34", W 26", L 56", (fading across B, minor sequin loss/damage/scratches) good.

---



**248: ALBER ELBAZ FOR LANVIN BLACK MINIDRESS, PARIS, A/W 2009**

USD 500 - 800

Black wool blend sheath dress w/ asymmetrical twist bow at left front SH creating single cap sleeve, CB zip closure, first look in Ready-to-Wear collection Fall 2009, label "Lanvin Hiver 2009", unstretched B 38", W 26", H 34", L 39.5", (label partially detached) excellent.

---



**249: COUTURE PAQUIN SILK TAFFETA CAPE, PARIS, S/S 1915**

USD 3,000 - 5,000

Burgundy changeante silk taffeta cape w/ blue silk velvet collar insertion, twisted bias band to pleated yoke capelet & hem, black silk velvet CF ties w/ self-covered drops at ends, SS arm slits, gathering along CB W, lined in cranberry gauze w/ bullion fringe, Ete 1915, label "Paquin Paris, Hiver 1913, Londres, Buenos Aires? & w/ stamped Ete 1915? & handwritten couture number 74775?", SH-SH 19", L 53", (15" seam opening & 1" tear CB neckline lining, pinholes, seams pulling both ends of arm slits, minor shattering at pleating, shattering to body at CB, CF & at SSs) fair.

---

## ***Decades of Decadence***



**250: DIOR BALL GOWN, NEW YORK, 1955**

USD 4,000 - 6,000

Strapless brocade evening gown in autumnal climbing rose motif on copper satin ground w/ fold-over neckline, fitted boned bodice, large circular panels from right H & asymmetrically trained slender skirt, reference photo dated October 25th, 1955, Bonwit Teller Fifth Avenue (not included), label "Christian Dior-New York Inc.", B 34.5", W 25.75", L 54"-59", (shattering & 1.5" repair CB W, bent/broken bones, several 1"-4" tears in net bodice structure, 10" seam opening underbodice neckline, shattering right H at top of bow, minor shattering at neckline, few tiny scuffs) fair-good.

---